

ADDITIONAL PAPERS

LICENSING SUB COMMITTEE

Monday, 26th February, 2024, 7.00 pm - Microsoft Teams (watch the live meeting [here](#) watch the recording [here](#))

Members: Councillors Anna Abela (Chair), Nicola Bartlett, Sheila Peacock

Quorum: 3

- 6. APPLICATION FOR A VARIATION OF A PREMISES LICENCE AT HORNSEY TOWN HALL ARTS CENTRE, HORNSEY TOWN HALL, THE BROADWAY, CROUCH END, LONDON N8 9BQ (HORNSEY) (PAGES 81 - 150)**

To consider an application for a variation of a premises licence.

Nazyer Choudhury, Principal Committee Co-ordinator
Tel – 020 8489 3321
Fax – 020 8881 5218
Email: nazyer.choudhury@haringey.gov.uk

Fiona Alderman
Head of Legal & Governance (Monitoring Officer)
George Meehan House, 294 High Road, Wood Green, N22 8JZ

Wednesday, 21 February 2024

This page is intentionally left blank



Licensing Authority
Haringey

Licensing Unit
Edmonton Police Station
462 Fore Street,
London
N9 0PW

PC Jade HAYNES 3719NA
Jade.haynes2@met.pnn.police.uk
www.met.police.uk

15th November 2023

Police Representation

**APPLICATION FOR A PREMISES LICENCE VARIATION –
HORNSEY TOWN HALL ARTS CENTRE, HORNSEY TOWN HALL, THE
BROADWAY, CROUCH END, LONDON N8 9BQ**

Dear Licensing Team,

This application is submitted by HORNSEY TOWN HALL ARTS CENTRE of the above business in regards to a premises licence variation **this is in connection to Licence LN/000015762.**

The police wish to make representations under the licencing objectives of, **Prevention of crime and disorder and Prevention of public nuisance.** We have concerns in regards to the Roof top terrace and also the Town square request.

The variations requested are as follows:

1. To update the Premises Licence Holder name from FEC Time + Space (UK) Limited to Hornsey Town Hall Arts Centre Limited and amend the registered office of the premises licence holder to 40-41 Furnival Street, London, EC4A 1JQ.
2. To amend the approved plan to:
 - a. Add Hornsey Town Hall Square
 - b. Add a café on the ground floor
 - c. Amend the area for licensable activities including the Co-Worker Space on the ground floor.
 - d. Add the Commercial Kitchen on the Lower Ground Floor.
 - e. Add the Cinema and Mayods Parlour on First Floor.
 - f. Remove licensable activities from the corridor on the First Floor.
 - g. Add Food and Beverage Bar and Chamber Balcony on the Second Floor.
 - h. Add Roof Terrace on Roof.
3. To increase the terminal hour for all licensable activities

4. To increase the terminal hour for licensable activities on Bank Holidays and the day preceding a Bank Holiday to 0130 the following morning closing at 0200.
5. To increase the terminal hour for New Year's Eve and New Year's Day so that the terminal hour for licensable activities for New Year's Eve is the start of permitted hours on New Year's Day other than in The Town Hall Square when hours for licensable activities are sought from 1000 to 0100.
6. To add late night refreshment on Mondays to Wednesdays from 2300 to 2330.
7. To extend the opening hours 7 days per week — see the box below for opening hours.
8. To replace Annex 2 conditions with the conditions accompanying this application

Regulated Entertainment: Plays

| | |
|----------------------|--------------------|
| Monday to Wednesday | 1000 to 2330 hours |
| Thursday to Saturday | 1000 to 0130 hours |
| Sunday | 1000 to 2245 hours |

Hours for Supper Room:

| | |
|----------------------|--------------------|
| Monday to Wednesday | 1000 to 2330 hours |
| Thursday to Saturday | 1000 to 0200 hours |
| Sunday | 1000 to 2245 hours |

Hours for Town Hall Square:

| | |
|------------------|--------------------|
| Monday to Sunday | 1000 to 2100 hours |
|------------------|--------------------|

Films

| | |
|----------------------|--------------------|
| Monday to Wednesday | 1000 to 2330 hours |
| Thursday to Saturday | 1000 to 0130 hours |
| Sunday | 1000 to 2245 hours |

Hours for Supper Room:

| | |
|----------------------|--------------------|
| Monday to Wednesday | 1000 to 2330 hours |
| Thursday to Saturday | 1000 to 0200 hours |
| Sunday | 1000 to 2245 hours |

Hours for Town Hall Square:

Monday to Sunday 1000 to 2100 hours

Hours for Roof Terrace:

Monday to Sunday 0800 to 2300 hours

Indoor Sporting Events

Monday to Wednesday 1000 to 2330 hours
Thursday to Saturday 1000 to 0130 hours
Sunday 1000 to 2245 hours

Hours for Supper Room:

Monday to Wednesday 1000 to 2330 hours
Thursday to Saturday 1000 to 0200 hours
Sunday 1000 to 2245 hours

Live Music, Recorded Music and Performance of Dance

Monday to Wednesday 1000 to 2330 hours
Thursday to Saturday 1000 to 0130 hours
Sunday 1000 to 2245 hours

Hours for Supper Room:

Monday to Wednesday 1000 to 2330 hours
Thursday to Saturday 1000 to 0130 hours
Sunday 1000 to 2245 hours

Hours for Town Hall Square:

Monday to Sunday 1000 to 2100 hours

Late Night Refreshment

Monday to Wednesday 2300 to 2330 hours
Thursday to Saturday 2300 to 0130 hours

Hours for Supper Room:

Monday to Wednesday 2300 to 2330 hours
Thursday to Saturday 2300 to 0200 hours

Sale of Alcohol

| | |
|----------------------|--------------------|
| Monday to Wednesday | 1100 to 2330 hours |
| Thursday to Saturday | 1100 to 0130 hours |
| Sunday | 1100 to 2245 hours |

Hours for Supper Room:

| | |
|----------------------|--------------------|
| Monday to Wednesday | 1000 to 2330 hours |
| Thursday to Saturday | 1000 to 0200 hours |
| Sunday | 1000 to 2245 hours |

Hours for Town Hall Square:

Monday to Sunday 1000 to 2300 hours

Supply of alcohol **ON** and **OFF** the premises.

Non started Timings for all licensable activities: Bank Holidays and the day preceding a Bank Holiday (except for the Supper Room when a Bank Holiday or the day preceding a Bank Holiday falls on a Thursday, Friday or Saturday and the Town Hall Square where standard hours apply) to 0130 the following morning.

Other than for the Town Hall Square from the end of permitted hours on New Year's Eve until the start of permitted hours on New Year's Day.

From 1000 to 0100 the following morning on New Years Eve for the Town Hall Square.

Hours open to Public

| | |
|---------------------|--------------------|
| Monday to Wednesday | 0700 to 2330 hours |
| Thursday | 0700 to 0030 hours |
| Friday to Saturday | 0700 to 0230 hours |

Hours for Supper Room:

Monday to Wednesday 1000 to 2330 hours

Thursday to Saturday 1000 to 0230 hours

Sunday 1000 to 2245 hours

Hours for Town Hall Square:

Monday to Sunday 0000 to 0000 hours

Hours for Roof Terrace:

Monday to Sunday 0800 to 2300 hours

Non-standard Timings: Bank Holidays and the day preceding a Bank Holiday (except for the Supper Room when a Bank Holiday or the day preceding a Bank Holiday falls on a Thursday, Friday or Saturday and the Roof Terrace where standard hours apply) to 0230 the following morning.

Other than the Roof Terrace from the end of permitted hours on New Year's Eve until the start of permitted hours on New Year's Day.

The geographical location of the venue is set on a fairly busy high road. There are also a number of residential roads within close proximity of the venue. This is next to a bus stop however although this could help with dispersal it could also encourage guests loitering in the area. There are train stations within proximity to the venue which is a short walk away, this could help with dispersal however it could also result in being unsafe for intoxicated people with passing vehicles. This could also pose a danger to vulnerable guests which could enter and attend the venue if they cannot afford a room at the premises or a taxi later that night, this would be another high concern for police in relation to **VAWG** (violence against women & Girls) which is a priority topic at this current time to the point where the police are setting Ten new commitments on how to reduce this and public meetings are taking place in regards to this, the one for Haringey borough was held on 26th October.

We the police have assessed the application and the Operating schedule submitted by the applicant describing the steps intended to be taken in order to promote the four Licensing Objectives of:

- 1) **The Prevention Of Crime and Disorder**
- 2) **Public Safety**
- 3) **The prevention of Public Nuisance**
- 4) **The protection of children from Harm**

However, we the police have a number of concerns in regards to the applications. The concerns police have relate to the following:

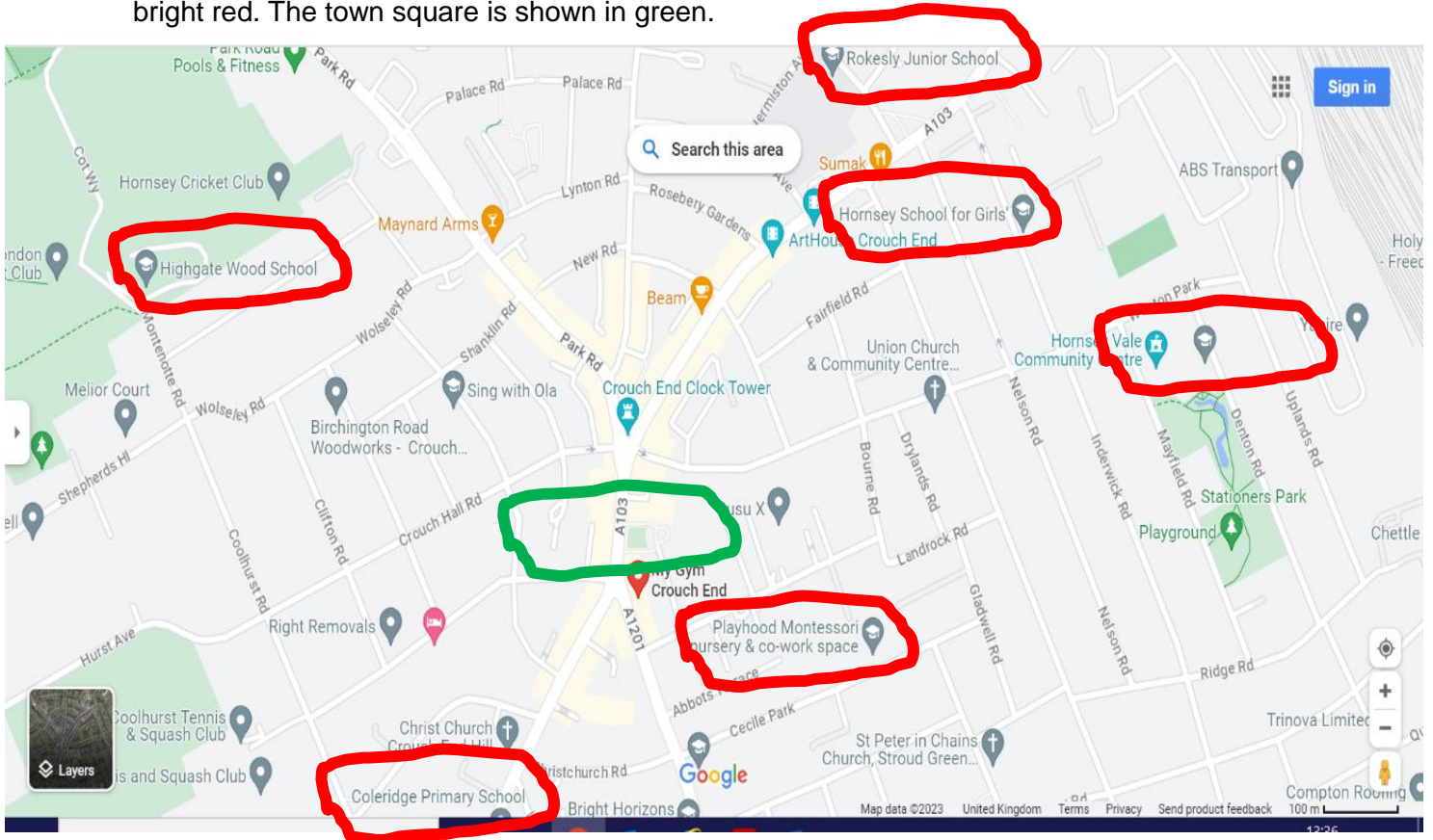
- The management and safety of the roof top terrace.
- The Town hall square.

The plan for town hall square which was submitted is shown below and then following that is a picture from the front of the view of the square:

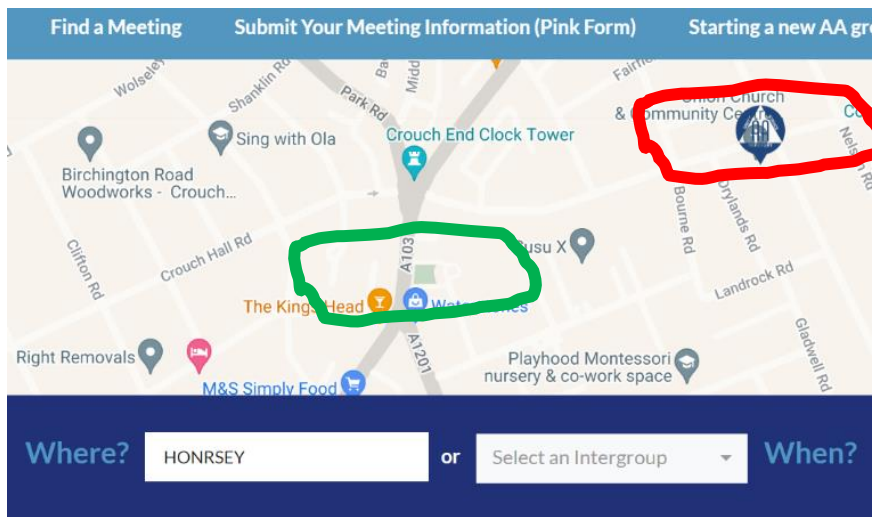


As you can see from the above this is extremely close to the road and the terminal hour for the supply of alcohol requested is 2300hours. This could prove dangerous for members of the public especially once intoxicated.

Further to this, there are multiple schools near this venue, this could impact children in the locality on their day to day life coming to and from school. These are vulnerable children who would have to come passed this open space which would now be permitting alcohol throughout the day until late at night. The below picture shows an idea of just how many schools and how many vulnerable children could pass through here. The educational premises are circled in bright red. The town square is shown in green.



There is also an Alcoholics Anonymous venue one road down from this venue. People recovering from this could be on their way home past the town square and could be drawn in by the atmosphere and drinks being directly in front of them in an open space. This could damage their recovery. This is not the same as a bar or pub. As this would be outdoors in an open space which is open to the public and would be hard to avoid walking past.



Further to this, the venue is imbedded on a busy high street with residents living in the vicinity to the venue. The members of public also have access to this square, allowing alcohol until 2300hours is essentially allowing street drinking at the location, this is a high factor to ASB which is a common complaint in the borough. Without a substantial dispersal plan in place, it would give a detrimental effect on the immediate residents and impact their day to day life and this would be needed to stop the natural noise of intoxicated people leaving the venue at the early hours. The dispersal alone of people awaiting to leave whether on foot, by taxi, or by bus will still generate a loitering purpose within the location. This will be a permanent hour for the premises, it could cause a huge impact on local residents. Although you could argue that there is a bus stop directly outside the venue and that this will disperse people quickly, it also gives a route directly outside for more new comers/guests to come. How will this be managed? With regards to bus's most time tables will be every 10 minutes IF there are no delays, however 10 minutes is a long time for party goes to disrupt the lively hood of locals, not to mention this could cause an increase on alcohol fuelled crime and disorder in the locality.

We therefore ask the following of the applicant

- 1) **What is the dispersal policy?**
- 2) **What is the 24 hour security policy?**
- 3) **Are there any plans in regards to safety around the Town Square?**
 - > **What events are being held here?**
 - > **How will the natural noise of people and intoxicated people be limited outside with a 2300hours alcohol end time?**
 - >**How are people going to be safeguarded from the road?**

>How is the view of 'street drinking' going to be eliminated?

>There are schools nearby, how are the children going to be safeguarded from this? This could be a route they take home?

>When there are events being held, how is the entry to these going to be managed when it is an open space?

4) In regards to the roof top terrace, what provisions will be put in place to prevent any horrific accidents, eg someone falling from the top.

In summary

We the Police **object** to the below points in the applications under **Prevention of Crime and Disorder and Prevention of public nuisance.**

- 1) To amend the approved plan to:
 - Add Hornsey Town Hall Square
 - Add Roof Terrace on Roof.

It is feared that without a detailed plan this may not be able to be managed. If there is not a limit to people entering the square on a day to day basis or for events, the numbers could get significantly high quickly. If the area is still open to the public this may be too late to conduct a risk assessment early enough do have adequate security as stated in the applicants operating schedule. A lot of children as shown will be exposed the consumption of alcohol as shown above, It may seem that it is just a drink but the effects of alcohol can be the same of which a drug would give, it effects a person cognitive functions and this could not only promote drinking to younger children it could also highlight a street drinking problem, people could purchase alcohol in a local shop and then sit in the town square as it would then be hard to know whether it was or wasn't purchased from the venue.

Furthermore the police give the applicant to respond to this representations with conditions which can rectify and dissolve these concerns. Should the applicant take away these concerns the police will withdraw their representations. Please respond no later than SUNDAY 19th NOVEMBER 2023.

I reserve the right to provide further information to support this representation.

Regards,



PC HAYNES 3719NA

North Area Licensing Officer

This page is intentionally left blank

Bringing Hornsey Town Hall Back to Life



Our Heritage



→ It all started in 1933 when a competition was held by the Hornsey Borough Council to find an architect to oversee the building of their new offices in Crouch End. Reginald Uren's design won the architectural competition out of over 200 entries.

→ The doors opened to the now modernist art-deco icon, Hornsey Town Hall, in 1935. Uren was later awarded the RIBA bronze award, naming his design the best building in London of that year.

The History of Hornsey Town Hall

1933



Architect Reginald Uren wins design competition to build the Councils' new headquarters.

1950

UK General Election results announced on the Committee Room balcony, filmed by the BBC.



1963

Hosts Valentine's Day concert by 'The Ray Davies Quartet', later to become The Kinks.



1971

QUEEN play one of their first ever gigs at Hornsey Town Hall.



2015

Hornsey Town Hall Arts Centre was started by ANA – building used for silent discos, yoga, workspace, gallery space and community events.



2003

"Peep Show" title sequence for Channel 4's BAFTA winning series filmed outside the Town Hall.



1987

Town Hall finance department agree it is too costly to keep the Town Hall open as a working building, and it is closed.

2016-18

FEC (Far Eastern Consortium) applies for planning permission to restore the building and open a hotel, arts centre and 146 flats on the site.



2019

'CREATE' event is held to celebrate the future of HTH. The doors are then closed, with Ardmore, the appointed contractor, starting the restoration.



2023

Grand Re-opening.



Our Spaces →



The Assembly Hall





The Function Room

The Committee Room



The Council Chamber





HILTONSOUNDSEY

The Supper Room

The Rooftop



The Members Room





The Mayor's Parlour



The Cinema

The Town Hall Square



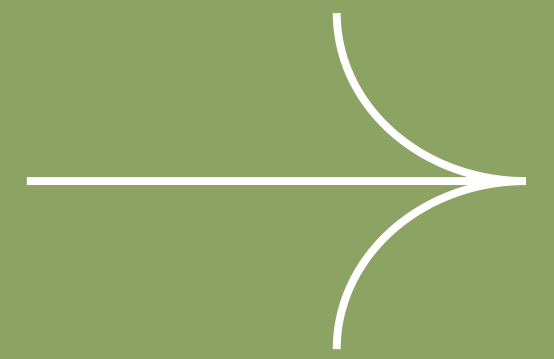
Room Use Guide

* Colour Key: The darker the colour, the more suitable the space for your event type.

| | | SPECIAL OCCASIONS | | | | PERFORMANCE + BOX OFFICE | | | | | | |
|--------------|---------------------|-------------------|---------------------|----------------|-----------|--------------------------|-------------------|-----------------|-------------------|---------------|-------------|--------------------|
| | | Weddings | Family Celebrations | Private Dining | Birthdays | Performing Arts | Fairs + Festivals | Art Exhibitions | Pop-Up Screenings | Comedy Nights | Jazz Nights | Concerts + DJ Sets |
| Ground Floor | The Assembly Hall | Dark | Medium | Dark | Light | Very Dark | Dark | Dark | Dark | Dark | Dark | Dark |
| | The Function Room | Medium | Medium | Light | Medium | Light | Dark | Dark | Light | Light | Light | Light |
| 1st Floor | The Committee Room | Dark | Dark | Medium | Dark | Dark | Dark | Dark | Light | Light | Light | Light |
| | The Council Chamber | Medium | Light | Light | Light | Dark | Dark | Light | Dark | Dark | Dark | Dark |
| | The Mayor's Parlour | Dark | Light | Light | Light | Light | Light | Dark | Light | Light | Light | Light |
| 2nd Floor | The Members Room | Light | Light | Medium | Light | Light | Light | Light | Light | Light | Light | Light |
| | The Cinema | Medium | Light | Light | Dark | Light | Light | Dark | Dark | Light | Light | Light |
| | The Rooftop | Light | Medium | Medium | Dark | Light | Dark | Light | Dark | Dark | Dark | Light |
| Lower Ground | The Supper Room | Dark | Dark | Medium | Light | Dark | Light | Dark | Dark | Dark | Dark | Dark |

| | | PRIVATE + CORPORATE FUNCTIONS | | | | CREATIVE EDUCATION | | HEALTH+WELLBEING | | | | |
|--------------|---------------------|-------------------------------|-------------|------------------|----------|---------------------|-------------------|----------------------|------------------|------------------------|----------------|-----------|
| | | Round Table Dinners | Conventions | Product Launches | Meetings | Lectures + Seminars | Skills + Training | Martial Arts Classes | Dance + Exercise | Yoga + Pilates Classes | Support Groups | Workshops |
| Ground Floor | The Assembly Hall | Dark | Dark | Medium | Light | Dark | Light | Light | Light | Light | Light | Light |
| | The Function Room | Dark | Dark | Medium | Light | Dark | Dark | Dark | Dark | Dark | Dark | Dark |
| 1st Floor | The Committee Room | Dark | Dark | Medium | Dark | Light | Light | Dark | Dark | Dark | Dark | Dark |
| | The Council Chamber | Light | Dark | Dark | Light | Dark | Dark | Light | Light | Light | Light | Dark |
| | The Mayor's Parlour | Light | Light | Light | Dark | Dark | Light | Light | Light | Light | Dark | Dark |
| 2nd Floor | The Members Room | Light | Light | Light | Dark | Dark | Dark | Light | Light | Dark | Dark | Dark |
| | The Cinema | Light | Medium | Medium | Light | Light | Light | Light | Light | Light | Light | Light |
| | The Rooftop | Light | Light | Medium | Light | Light | Light | Light | Dark | Dark | Light | Light |
| Lower Ground | The Supper Room | Dark | Light | Medium | Dark | Dark | Dark | Dark | Dark | Dark | Dark | Dark |

Floorplans



THE ASSEMBLY HALL

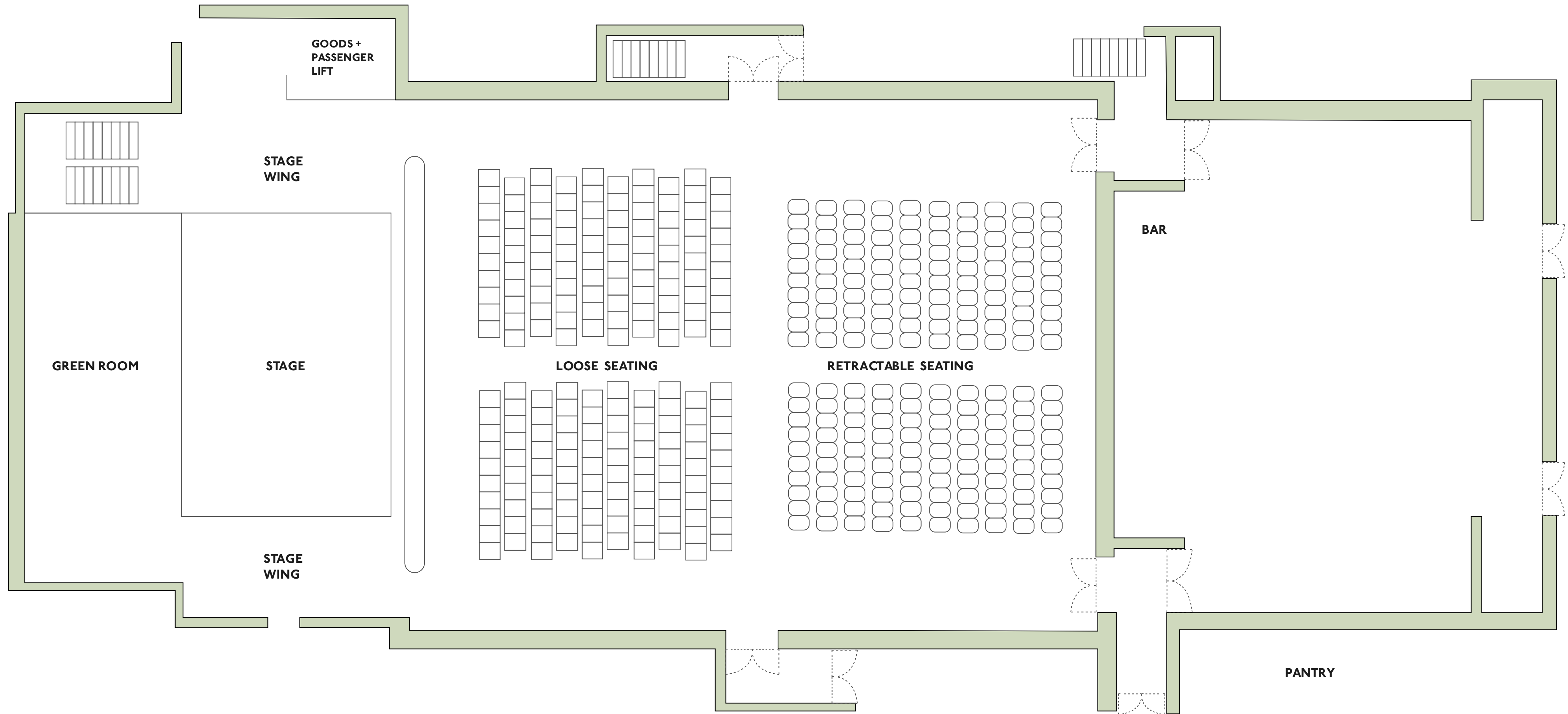
Area: 3,777 sq ft

Dimensions:
80ft (length) x 47ft (width)

THE FUNCTION ROOM

Area: 1,614 sq ft

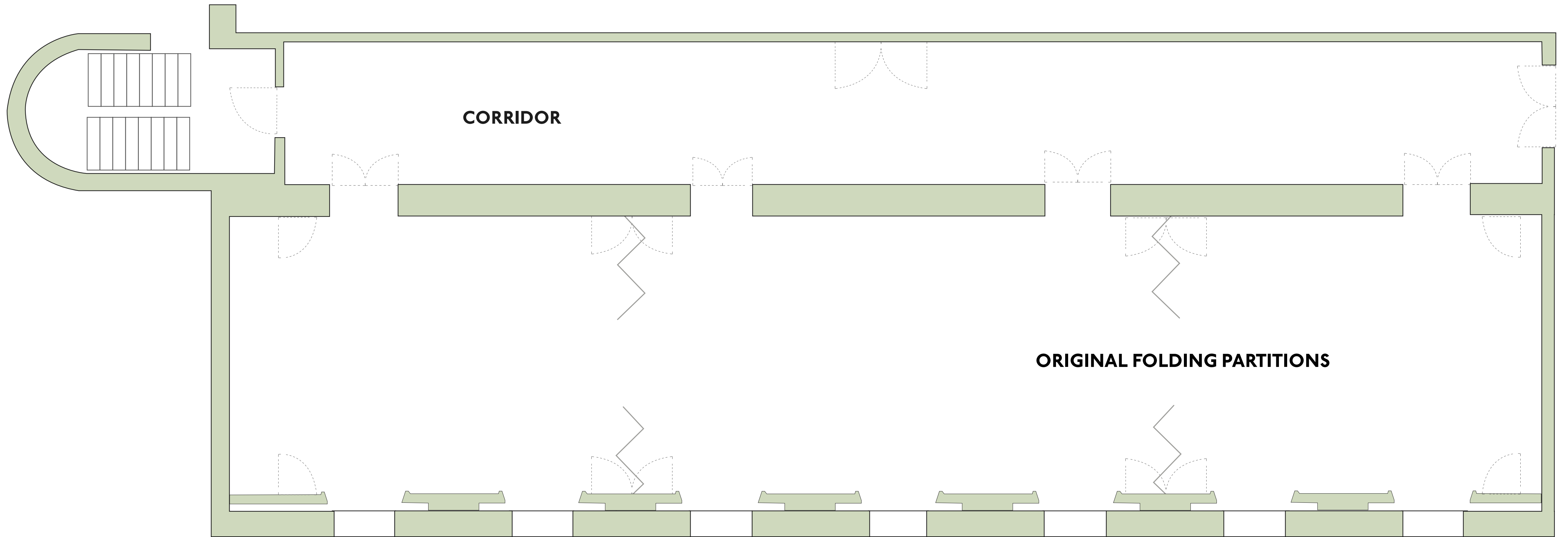
Dimensions:
36ft (length) x 45ft (width)



THE COMMITTEE ROOM

Area: 1,323 sq ft

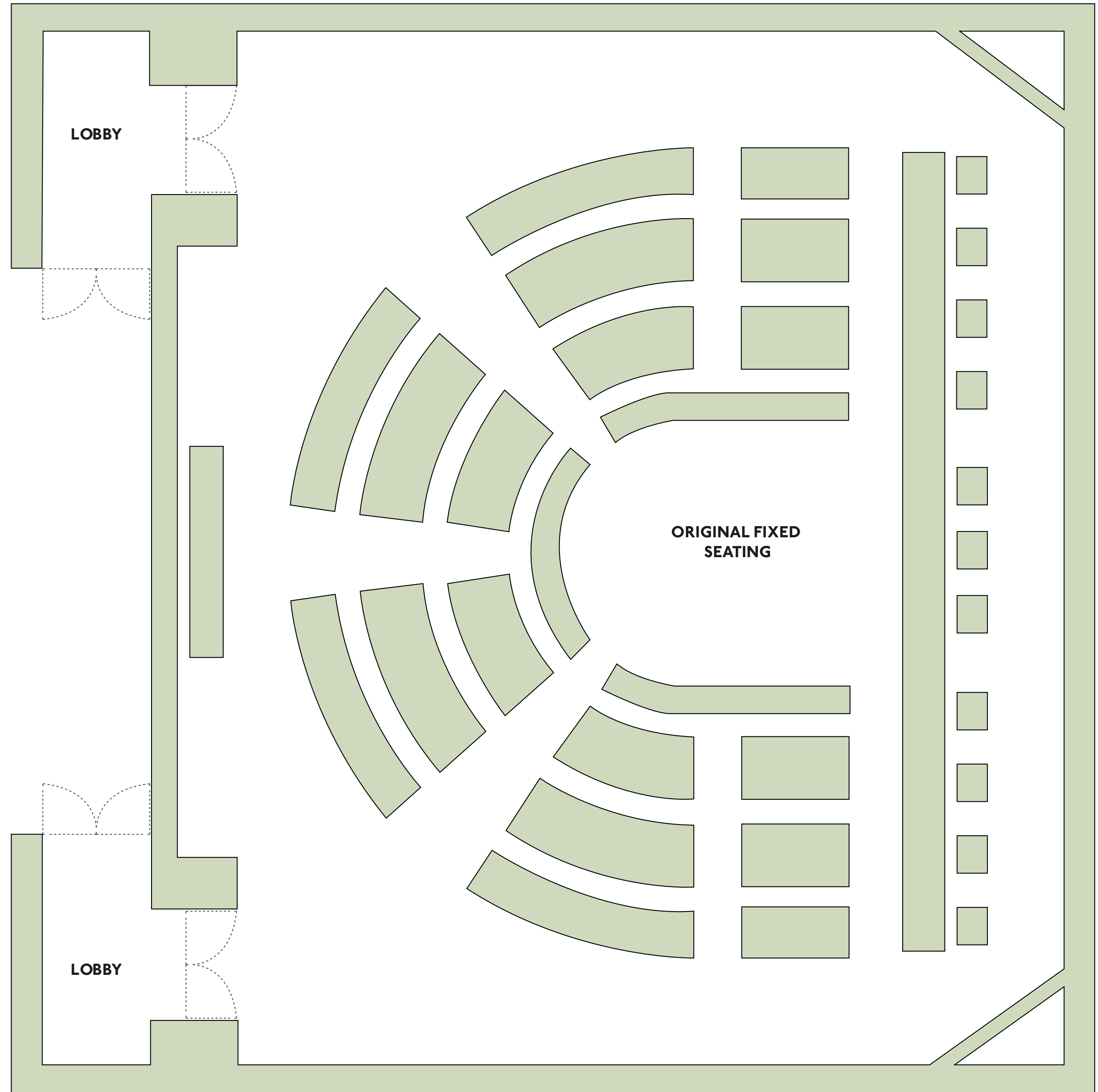
Dimensions:
75ft (length) x 18ft (width)

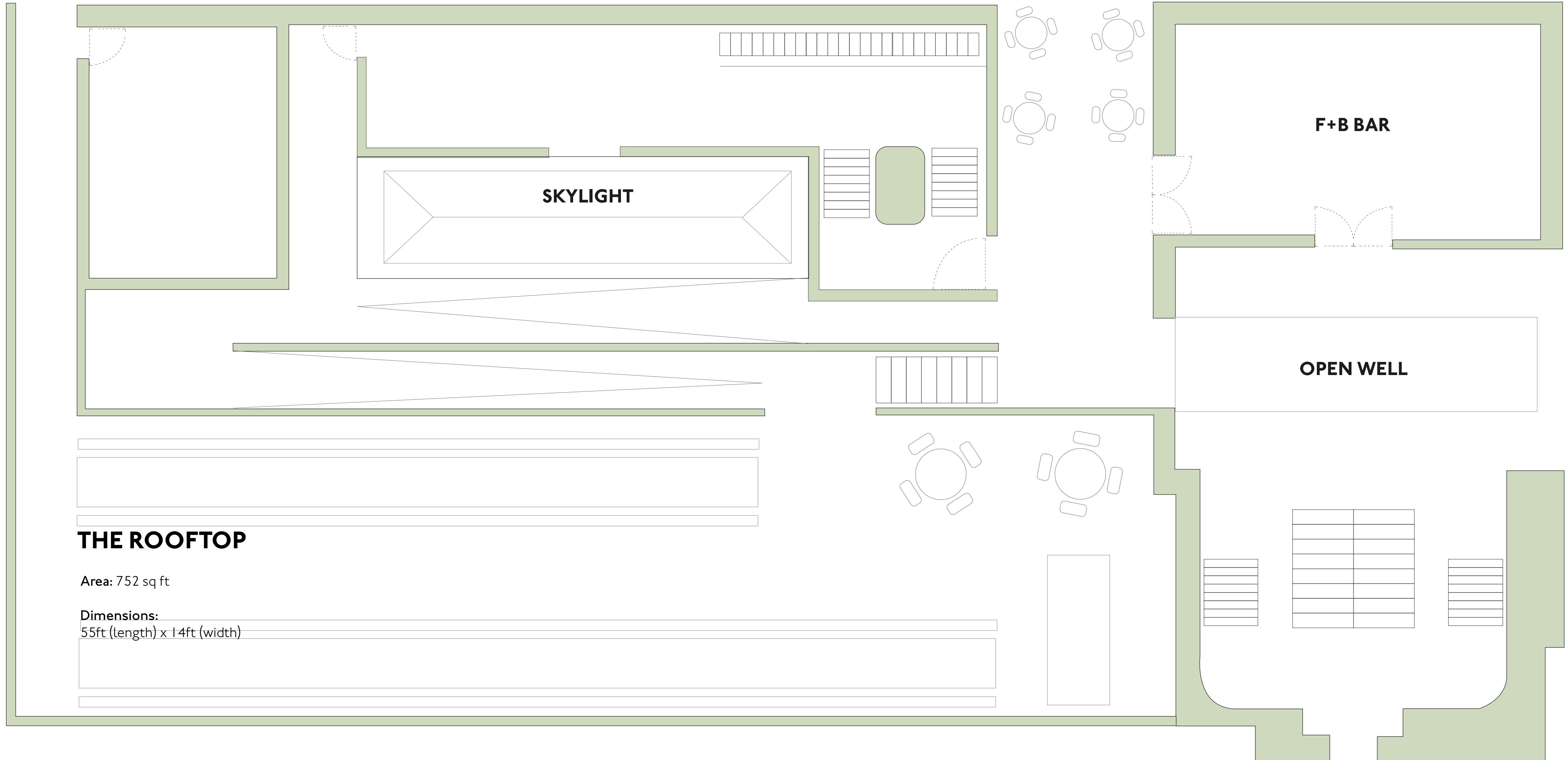


THE COUNCIL CHAMBER

Area (with viewing gallery): 2,197 sq ft
Area: 1,197 sq ft

Dimensions:
48ft (length) x 40ft (width)

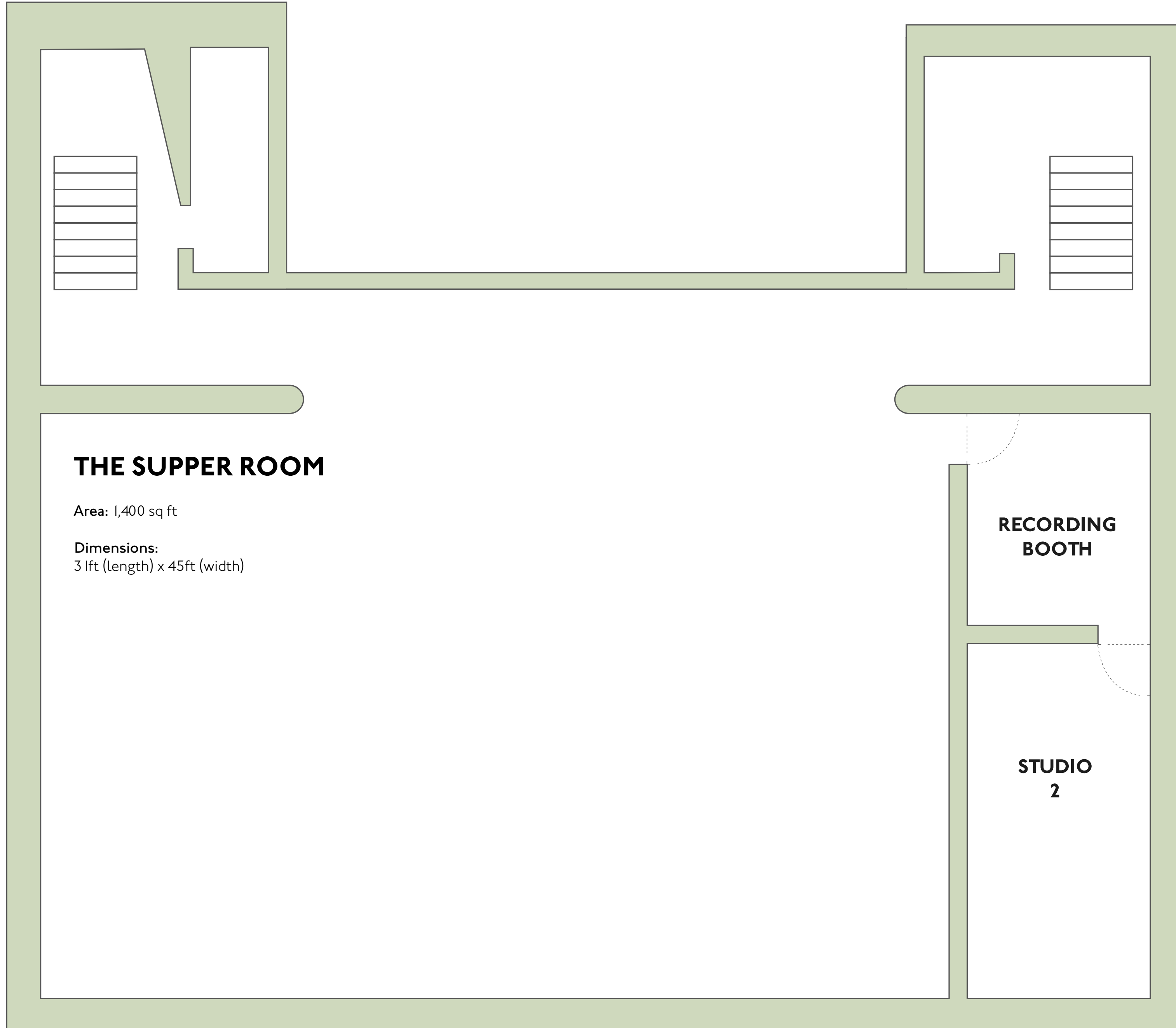




THE ROOFTOP

Area: 752 sq ft


Dimensions:
55ft (length) x 14ft (width)



Our Five Key Pillars

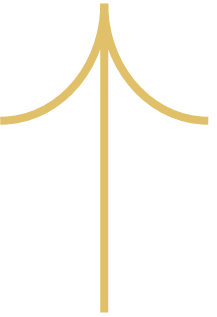
THE ARTS CENTRE

Performance
Events
Workspace
Socialise
Create



Performance

Enjoy a vibrant lineup of events, including music, comedy, theatre, dance and more.



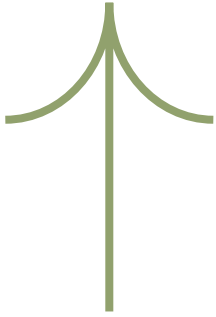
THE ARTS CENTRE

Performance
Events
Workspace
Socialise
Create



Events

Hire one of our restored heritage spaces and enjoy first-class hospitality and cutting-edge tech.



THE ARTS CENTRE

Performance
Events
Workspace
Socialise
Create



Workspace

Reinvent the way you work with a flexible workspace memberships tailored to creatives.



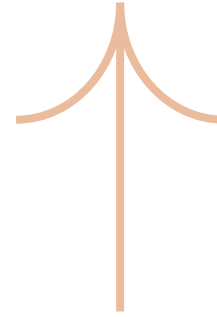
THE ARTS CENTRE

Performance
Events
Workspace
Socialise
Create



Socialise

Meet, greet and entertain at one of our bars, restaurants, panoramic rooftop or unique cinema experience.



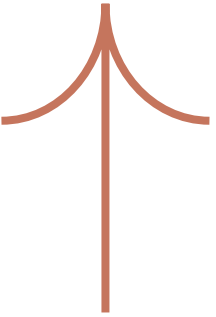
THE ARTS CENTRE

Performance
Events
Workspace
Socialise
Create



Create

Discover your space to create as Hornsey Town Hall fills with activity once more.





Performance

- Performances will include live music concerts, dance recitals, theatre shows, comedy nights, DJ sets, talks, conferences and many more.
- We've received enquiries from the likes of Tears For Fears, North London Symphony Orchestra, Stagecoach Performing Arts, Rough Trade, DICE and more.

Events



→ We will host a vast and wide-ranging array of events including weddings, family celebrations, birthdays, fairs + festivals, art exhibitions, round table dinners, conventions, product launches, martial arts classes, dance and exercise classes, support groups and more.

→ Enquiries include weddings, art exhibitions, family celebrations (inc. Bar and Bat Mitzvahs, Holy Communion and a baby shower), birthday parties, dance and exercise classes amongst many others.

Workspace



- There will be two dedicated workspace areas in the Town Hall; The Gallery on the ground floor and The Assembly Loft on the upper floor.
- Workspace memberships are available from casual lounge memberships, more permanent fixed memberships and dedicated studio memberships.
- We've had hundreds of enquiries for Workspace Memberships from professionals working across design, tech, Film & TV, PR, fashion and many more creative sectors.

Socialise



→ On completion you'll be able to socialise in one of our refurbished spaces dedicated to food and drink, from cake and coffee in our house café, alfresco dining on the Town Hall Square, or relaxing in one of our restaurants and panoramic Rooftop Bar.



Let's Get Social!
Become a Social Member

→ hthartscentre.com

Benefits include

No
box office
fees



Priority
bookings



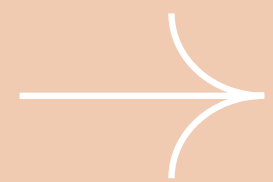
Access to
special
preview
events



Reduced
ticket prices
on selected
events



Discounts
on food
+ drinks



Hornsey Town Hall Arts Centre offers the exciting opportunity to join as a Social Member and enjoy exclusive perks and discounts once the Town Hall reopens.

 
@hthartscentre
#TownHallReborn



hthartscentre.com

Create

We have received multiple requests for community bookings, including recurring event and performance related activities including:

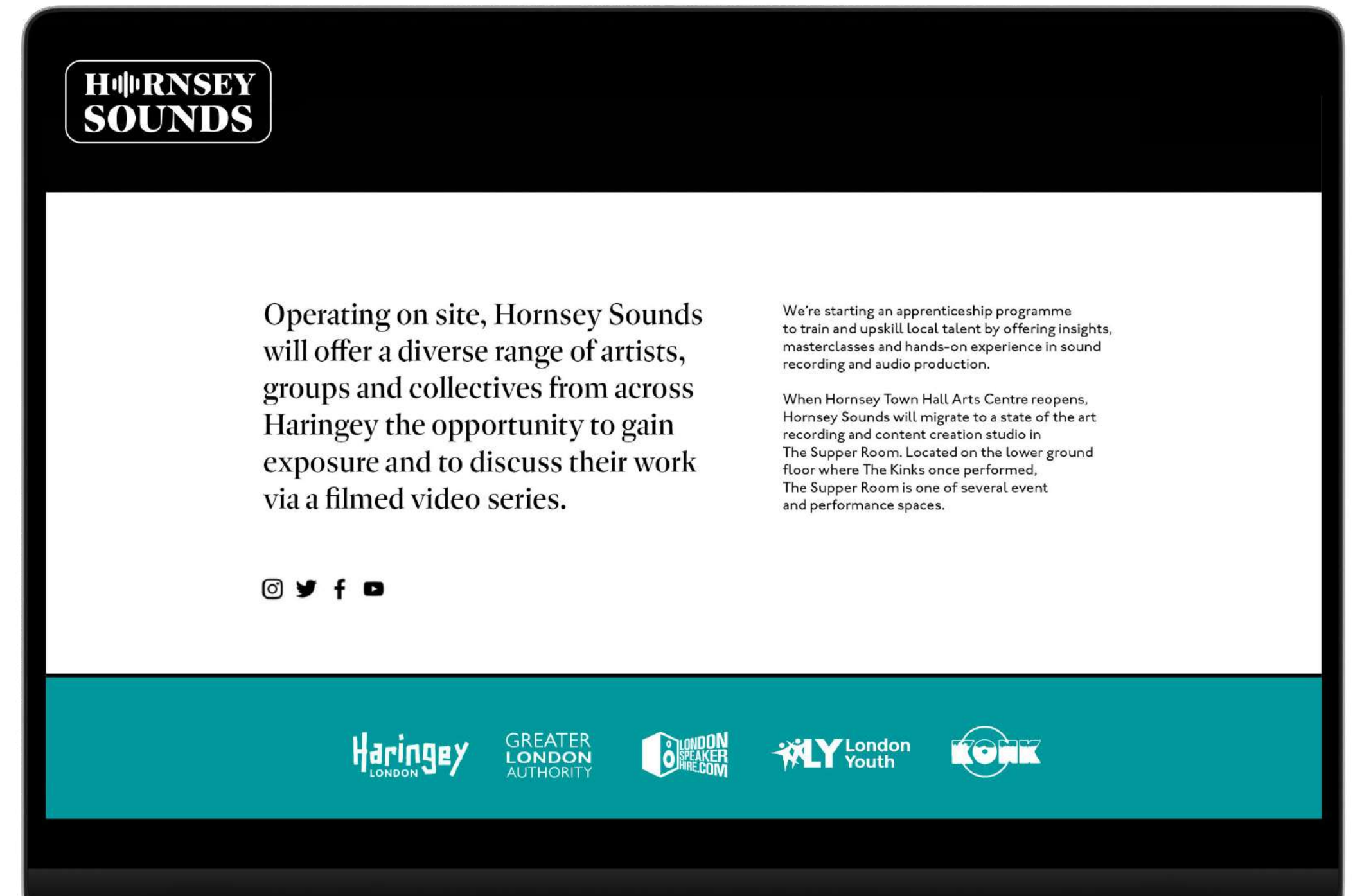
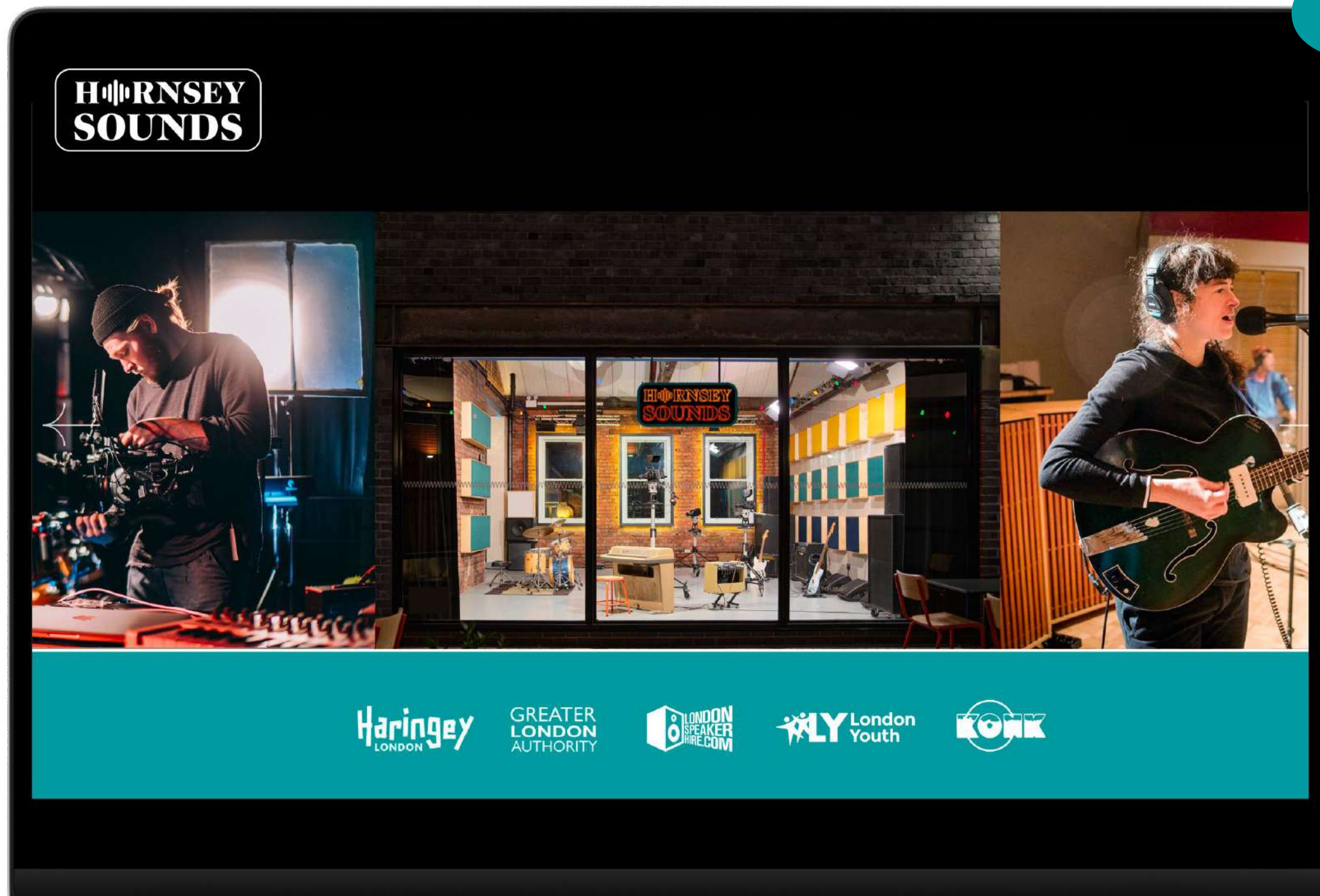
- Dance classes
- Multiple art workshops
- Yoga and wellbeing classes
- Children's music+art classes
- Roller skating events
- Makers' workshops





- Hornsey Town Hall Arts Centre has launched Hornsey Sounds, supporting Haringey's international reputation for music and the birthplace of artists such as Adele, Skepta and Wretch 32.
.....
- Operating on site, Hornsey Sounds will offer a diverse range of artists, groups and collectives from across Haringey the opportunity to gain exposure and to discuss their work via a filmed video and live event series.
.....
- We will be starting an apprenticeship programme to train and upskill local talent by offering insights, masterclasses and hands-on experience in sound recording and audio production.

Training + Skills

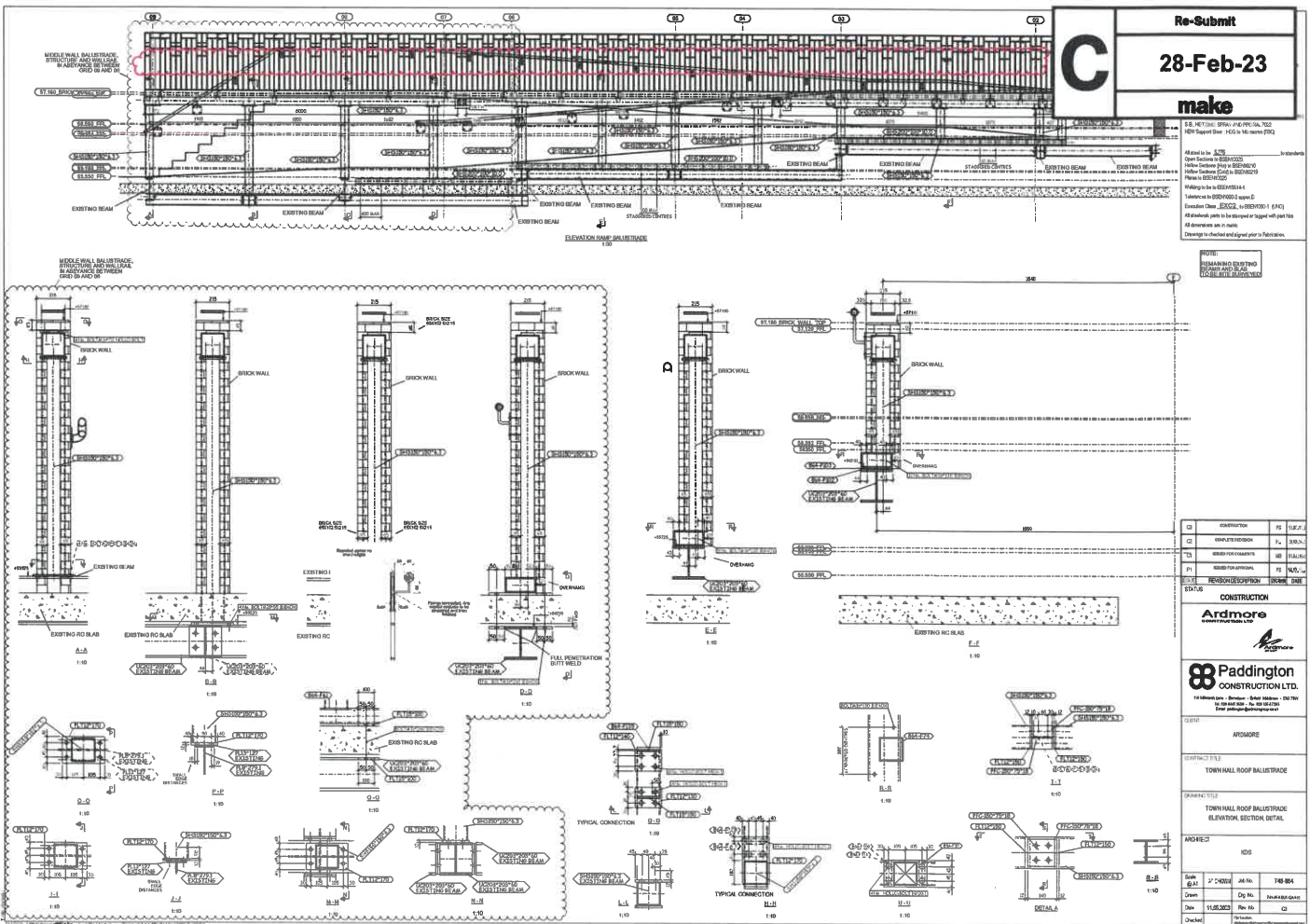


→ This Hornsey Sounds initiative, will work in collaboration with nationally recognised educational, skills and technical partners and is designed to showcase, train and upskill the next generation of talent.

19 **TH** 35 **THE
ARTS
CENTRE**

#TownHallReborn

This page is intentionally left blank

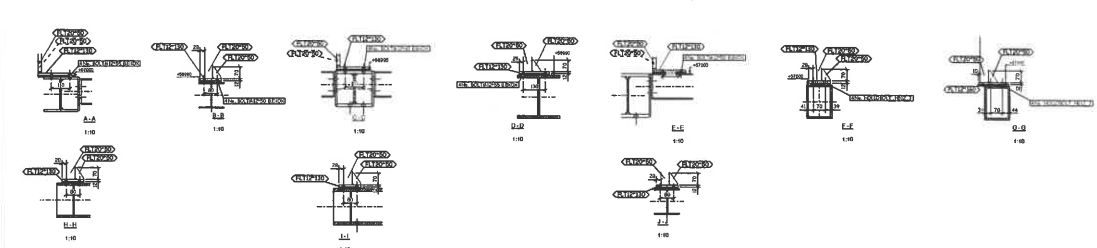
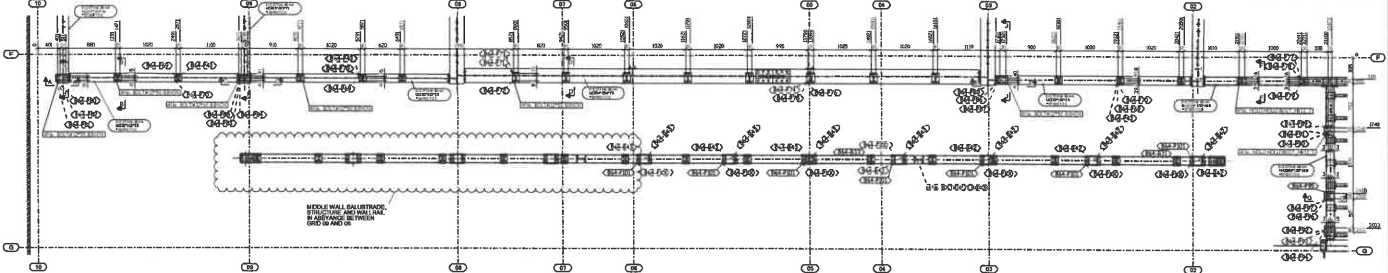


Notes:

| | |
|----------|--------------------------|
| B | Comments as Noted |
| | 28-Feb-23 |
| | make |

NEP Project Ref: 10013490 (Rev. 002)

All details to be EITC
 Client: [REDACTED]
 Project: [REDACTED]
 Drawn: [REDACTED]
 Checked: [REDACTED]
 Date: [REDACTED]



| | | | |
|-----|-----------------------|-----|----------|
| Q1 | FOUNDATION | 10 | 10/21/20 |
| Q2 | CONCRETEWORK | 11 | 23/01/23 |
| Q3 | STEELWORK | 12 | 10/21/20 |
| Q4 | MECHANICAL/ELECTRICAL | 13 | 10/21/20 |
| Q5 | PAINTWORK | 14 | 10/21/20 |
| Q6 | GLAZING | 15 | 10/21/20 |
| Q7 | LANDSCAPE | 16 | 10/21/20 |
| Q8 | MECHANICAL/ELECTRICAL | 17 | 10/21/20 |
| Q9 | MECHANICAL/ELECTRICAL | 18 | 10/21/20 |
| Q10 | MECHANICAL/ELECTRICAL | 19 | 10/21/20 |
| Q11 | MECHANICAL/ELECTRICAL | 20 | 10/21/20 |
| Q12 | MECHANICAL/ELECTRICAL | 21 | 10/21/20 |
| Q13 | MECHANICAL/ELECTRICAL | 22 | 10/21/20 |
| Q14 | MECHANICAL/ELECTRICAL | 23 | 10/21/20 |
| Q15 | MECHANICAL/ELECTRICAL | 24 | 10/21/20 |
| Q16 | MECHANICAL/ELECTRICAL | 25 | 10/21/20 |
| Q17 | MECHANICAL/ELECTRICAL | 26 | 10/21/20 |
| Q18 | MECHANICAL/ELECTRICAL | 27 | 10/21/20 |
| Q19 | MECHANICAL/ELECTRICAL | 28 | 10/21/20 |
| Q20 | MECHANICAL/ELECTRICAL | 29 | 10/21/20 |
| Q21 | MECHANICAL/ELECTRICAL | 30 | 10/21/20 |
| Q22 | MECHANICAL/ELECTRICAL | 31 | 10/21/20 |
| Q23 | MECHANICAL/ELECTRICAL | 32 | 10/21/20 |
| Q24 | MECHANICAL/ELECTRICAL | 33 | 10/21/20 |
| Q25 | MECHANICAL/ELECTRICAL | 34 | 10/21/20 |
| Q26 | MECHANICAL/ELECTRICAL | 35 | 10/21/20 |
| Q27 | MECHANICAL/ELECTRICAL | 36 | 10/21/20 |
| Q28 | MECHANICAL/ELECTRICAL | 37 | 10/21/20 |
| Q29 | MECHANICAL/ELECTRICAL | 38 | 10/21/20 |
| Q30 | MECHANICAL/ELECTRICAL | 39 | 10/21/20 |
| Q31 | MECHANICAL/ELECTRICAL | 40 | 10/21/20 |
| Q32 | MECHANICAL/ELECTRICAL | 41 | 10/21/20 |
| Q33 | MECHANICAL/ELECTRICAL | 42 | 10/21/20 |
| Q34 | MECHANICAL/ELECTRICAL | 43 | 10/21/20 |
| Q35 | MECHANICAL/ELECTRICAL | 44 | 10/21/20 |
| Q36 | MECHANICAL/ELECTRICAL | 45 | 10/21/20 |
| Q37 | MECHANICAL/ELECTRICAL | 46 | 10/21/20 |
| Q38 | MECHANICAL/ELECTRICAL | 47 | 10/21/20 |
| Q39 | MECHANICAL/ELECTRICAL | 48 | 10/21/20 |
| Q40 | MECHANICAL/ELECTRICAL | 49 | 10/21/20 |
| Q41 | MECHANICAL/ELECTRICAL | 50 | 10/21/20 |
| Q42 | MECHANICAL/ELECTRICAL | 51 | 10/21/20 |
| Q43 | MECHANICAL/ELECTRICAL | 52 | 10/21/20 |
| Q44 | MECHANICAL/ELECTRICAL | 53 | 10/21/20 |
| Q45 | MECHANICAL/ELECTRICAL | 54 | 10/21/20 |
| Q46 | MECHANICAL/ELECTRICAL | 55 | 10/21/20 |
| Q47 | MECHANICAL/ELECTRICAL | 56 | 10/21/20 |
| Q48 | MECHANICAL/ELECTRICAL | 57 | 10/21/20 |
| Q49 | MECHANICAL/ELECTRICAL | 58 | 10/21/20 |
| Q50 | MECHANICAL/ELECTRICAL | 59 | 10/21/20 |
| Q51 | MECHANICAL/ELECTRICAL | 60 | 10/21/20 |
| Q52 | MECHANICAL/ELECTRICAL | 61 | 10/21/20 |
| Q53 | MECHANICAL/ELECTRICAL | 62 | 10/21/20 |
| Q54 | MECHANICAL/ELECTRICAL | 63 | 10/21/20 |
| Q55 | MECHANICAL/ELECTRICAL | 64 | 10/21/20 |
| Q56 | MECHANICAL/ELECTRICAL | 65 | 10/21/20 |
| Q57 | MECHANICAL/ELECTRICAL | 66 | 10/21/20 |
| Q58 | MECHANICAL/ELECTRICAL | 67 | 10/21/20 |
| Q59 | MECHANICAL/ELECTRICAL | 68 | 10/21/20 |
| Q60 | MECHANICAL/ELECTRICAL | 69 | 10/21/20 |
| Q61 | MECHANICAL/ELECTRICAL | 70 | 10/21/20 |
| Q62 | MECHANICAL/ELECTRICAL | 71 | 10/21/20 |
| Q63 | MECHANICAL/ELECTRICAL | 72 | 10/21/20 |
| Q64 | MECHANICAL/ELECTRICAL | 73 | 10/21/20 |
| Q65 | MECHANICAL/ELECTRICAL | 74 | 10/21/20 |
| Q66 | MECHANICAL/ELECTRICAL | 75 | 10/21/20 |
| Q67 | MECHANICAL/ELECTRICAL | 76 | 10/21/20 |
| Q68 | MECHANICAL/ELECTRICAL | 77 | 10/21/20 |
| Q69 | MECHANICAL/ELECTRICAL | 78 | 10/21/20 |
| Q70 | MECHANICAL/ELECTRICAL | 79 | 10/21/20 |
| Q71 | MECHANICAL/ELECTRICAL | 80 | 10/21/20 |
| Q72 | MECHANICAL/ELECTRICAL | 81 | 10/21/20 |
| Q73 | MECHANICAL/ELECTRICAL | 82 | 10/21/20 |
| Q74 | MECHANICAL/ELECTRICAL | 83 | 10/21/20 |
| Q75 | MECHANICAL/ELECTRICAL | 84 | 10/21/20 |
| Q76 | MECHANICAL/ELECTRICAL | 85 | 10/21/20 |
| Q77 | MECHANICAL/ELECTRICAL | 86 | 10/21/20 |
| Q78 | MECHANICAL/ELECTRICAL | 87 | 10/21/20 |
| Q79 | MECHANICAL/ELECTRICAL | 88 | 10/21/20 |
| Q80 | MECHANICAL/ELECTRICAL | 89 | 10/21/20 |
| Q81 | MECHANICAL/ELECTRICAL | 90 | 10/21/20 |
| Q82 | MECHANICAL/ELECTRICAL | 91 | 10/21/20 |
| Q83 | MECHANICAL/ELECTRICAL | 92 | 10/21/20 |
| Q84 | MECHANICAL/ELECTRICAL | 93 | 10/21/20 |
| Q85 | MECHANICAL/ELECTRICAL | 94 | 10/21/20 |
| Q86 | MECHANICAL/ELECTRICAL | 95 | 10/21/20 |
| Q87 | MECHANICAL/ELECTRICAL | 96 | 10/21/20 |
| Q88 | MECHANICAL/ELECTRICAL | 97 | 10/21/20 |
| Q89 | MECHANICAL/ELECTRICAL | 98 | 10/21/20 |
| Q90 | MECHANICAL/ELECTRICAL | 99 | 10/21/20 |
| Q91 | MECHANICAL/ELECTRICAL | 100 | 10/21/20 |

CONSTRUCTION

Ardmore

Paddington CONSTRUCTION LTD.

10 Millers Lane, Dunstable, Bedfordshire, MK22 7YU
 Tel: 01462 850000 Fax: 01462 850001
 Email: paddington@paddington.co.uk

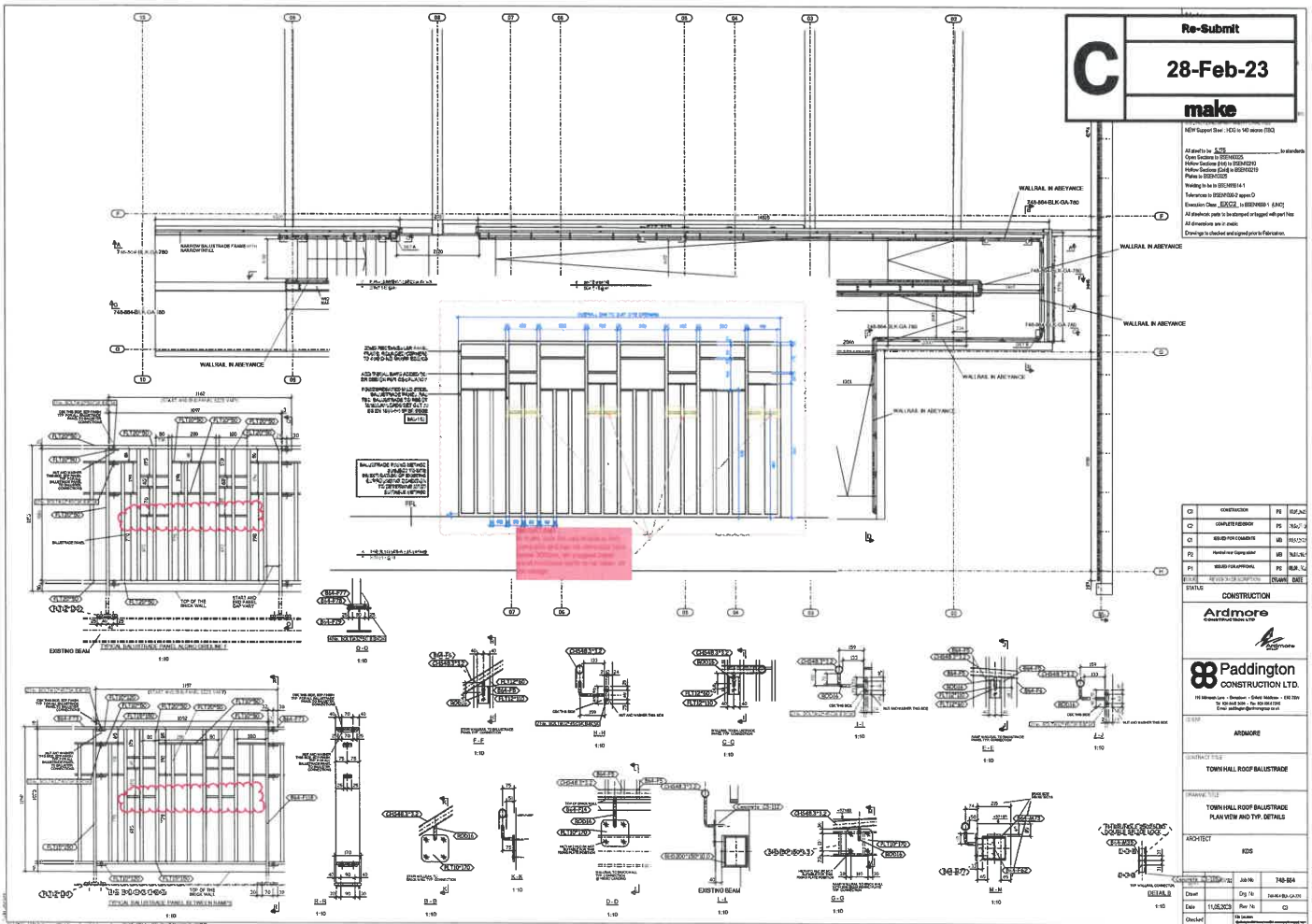
CLIENT: ARDMORE

CONTRACT TITLE: TOWN HALL ROOF BALUSTRADE

DRAWING TITLE: TOWN HALL ROOF BALUSTRADE BALUSTRADE TO EXISTING BEAM

PROJECT: IDS

| | | | |
|----------|------------|----------|----------|
| Date: | 21/05/2023 | Job No: | 100-001 |
| Drawn: | Dip No: | Scale: | As Shown |
| Check: | 11/05/2023 | Rev. No: | 01 |
| Checked: | | | |



C

Re-Submit

28-Feb-23

make

MEM Support Draw - FGD in MG work (FSD)

As shown by S.175

Open Section by BS5400-3

Minor Section F14 by BS5400-3

Minor Section F24 by BS5400-3

Minor Section F24 by BS5400-3

Minor Section F24 by BS5400-3

Working in to BS5400-3

Reference to BS5400-3

Execution Date: 28/02/23 in BS5400-3

All details shall be in accordance with the above

All drawings are in CAD

Drawings to include and sign-off by Fabricator

| | | | |
|---|--------------|----|----------|
| Q | CONSTRUCTION | 11 | 14/04/23 |
| Q | CONSTRUCTION | 12 | 14/04/23 |
| Q | CONSTRUCTION | 13 | 14/04/23 |
| Q | CONSTRUCTION | 14 | 14/04/23 |
| Q | CONSTRUCTION | 15 | 14/04/23 |
| Q | CONSTRUCTION | 16 | 14/04/23 |
| Q | CONSTRUCTION | 17 | 14/04/23 |
| Q | CONSTRUCTION | 18 | 14/04/23 |
| Q | CONSTRUCTION | 19 | 14/04/23 |
| Q | CONSTRUCTION | 20 | 14/04/23 |

CONSTRUCTION

Ardmore

CONSTRUCTION LTD.

88 Paddington

CONSTRUCTION LTD.

110 Wood Lane - London - SE16 5PU - UK

Tel: 020 7493 8888 - Fax: 020 7493 8889

Email: info@ardmoreconstruction.co.uk

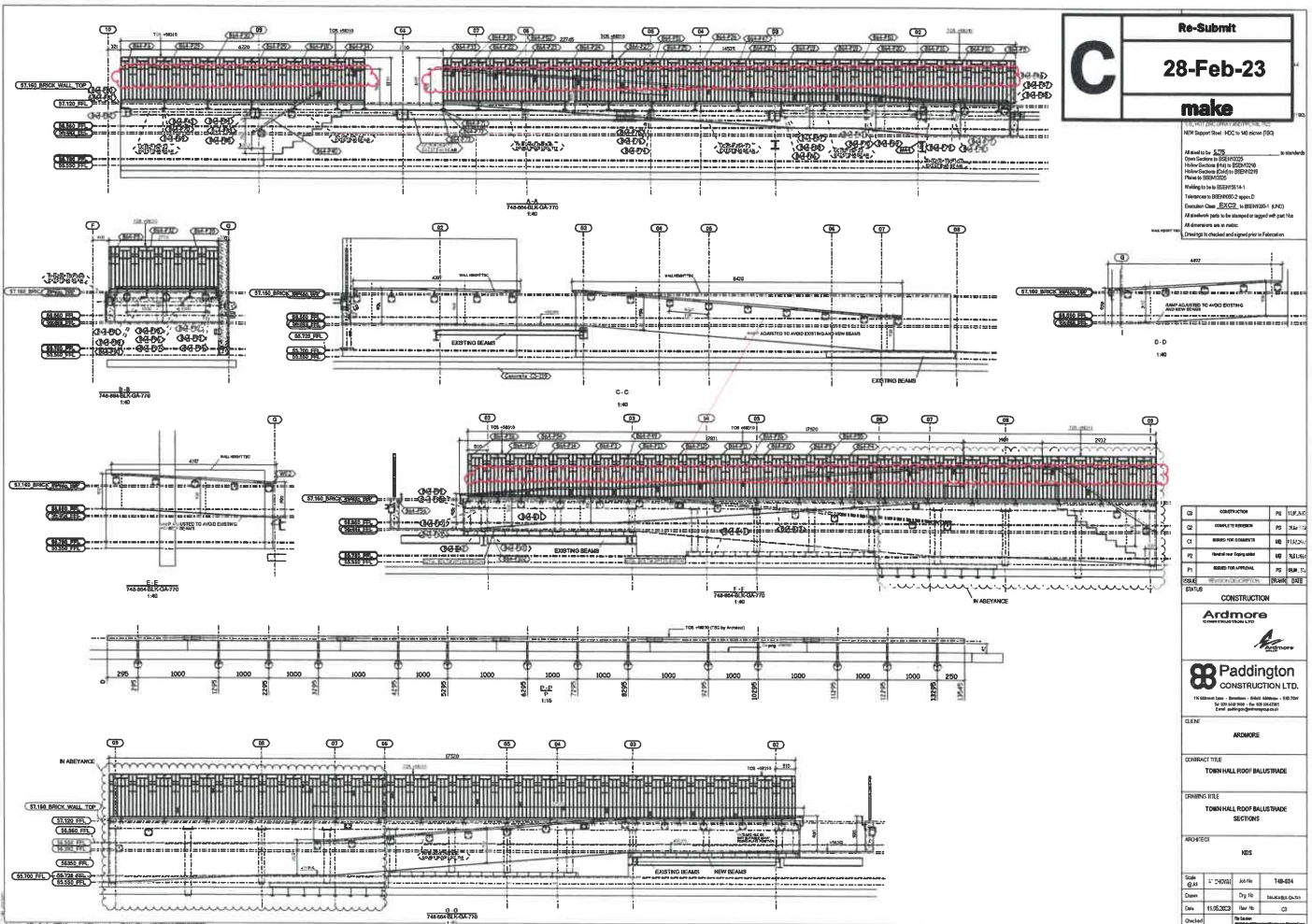
PROJECT: ARDMORE

CONTRACT TITLE: TOWN HALL ROOF BALLUSTRADE

FRAME TITLE: TOWN HALL ROOF BALLUSTRADE PLAN VIEW AND TYP. DETAILS

ARCHITECT: RDS

| | | | |
|--------|----------|--------|---------|
| Drawn | 11/02/23 | Rev 14 | 740-804 |
| Check | 11/02/23 | Rev 15 | 740-804 |
| Detail | 11/02/23 | Rev 16 | 740-804 |
| Check | 11/02/23 | Rev 17 | 740-804 |



Re-Submit
C
 28-Feb-23
 make

Approved by: [Signature]
 Drawn by: [Signature]
 Checked by: [Signature]
 Project: [Text]
 Date: [Text]

| | | | |
|----|------------|----|---------|
| 01 | FOUNDATION | 16 | 1/17/20 |
| 02 | CONCRETE | 16 | 1/17/20 |
| 03 | STEEL | 16 | 1/17/20 |
| 04 | BRICKWORK | 16 | 1/17/20 |
| 05 | GLASS | 16 | 1/17/20 |
| 06 | WOOD | 16 | 1/17/20 |
| 07 | MECHANICAL | 16 | 1/17/20 |
| 08 | ELECTRICAL | 16 | 1/17/20 |
| 09 | PLUMBING | 16 | 1/17/20 |
| 10 | PAINTWORK | 16 | 1/17/20 |
| 11 | LANDSCAPE | 16 | 1/17/20 |
| 12 | INTERIORS | 16 | 1/17/20 |
| 13 | EXTERNAL | 16 | 1/17/20 |
| 14 | MECHANICAL | 16 | 1/17/20 |
| 15 | ELECTRICAL | 16 | 1/17/20 |
| 16 | PLUMBING | 16 | 1/17/20 |
| 17 | PAINTWORK | 16 | 1/17/20 |
| 18 | LANDSCAPE | 16 | 1/17/20 |
| 19 | INTERIORS | 16 | 1/17/20 |
| 20 | EXTERNAL | 16 | 1/17/20 |

ARMCORE
 CONSTRUCTION
 COMMERCIAL LTD.

Paddington
 CONSTRUCTION LTD.

| | |
|----------------|------------------------------------|
| CLIENT | ARMCORE |
| CONTRACT TITLE | TOWN HALL ROOF BALUSTRADE |
| CONTRACT VALUE | TOWN HALL ROOF BALUSTRADE SECTIONS |
| PROJECT NO. | 105 |
| Scale | 1:100 |
| Drawn | DJ |
| Check | 11/05/23 |
| Date | 11/05/23 |
| Drawn | 11/05/23 |
| Check | 11/05/23 |

This page is intentionally left blank

In the
LONDON BOROUGH OF HARINGEY
LICENSING SUB-COMMITTEE

VARIATION OF PREMISES LICENCE
HORNSEY TOWN HALL ARTS CENTRE

SUBMISSIONS BY APPLICANT
PREMISES LICENCE HOLDER

Background

1. Hornsey Town Hall is an iconic landmark building within the Crouch End region of Haringey. Thanks to multi-million-pound investment, this building will once again play a community role in bringing arts, entertainment and productivity to the locality.
2. The premises closed its doors in 1987 before becoming the Hornsey Town Hall Arts Centre (HTHAC) in 2015. Under this guise, the premises were used for silent discos, yoga, workspace, gallery space and community events.
3. The premises licence to which this application relates was granted¹ in 2016 to the Ana Arts Project. The licence permitted regulated entertainment in the form of plays, films, sports, live and recorded music and dance in addition to the sale of alcohol (on sales) and late-night refreshment. The hours for these various activities were uniform across the different parts of the premises but varied dramatically from day to day and from activity to activity. For example, live music was permissible until 23:00 on Fridays but recorded music was permissible until 02:00. The licence was subsequently transferred to the applicant Premises Licence Holder.
4. Planning Permission² to realise the vision for the HTHAC was granted in March 2018 which allowed the applicant to look at the licencing aspect of the development and how this might need to be reshaped in order to properly promote the licensing objectives having regard to how the premises will be used going forward.
5. To assist the Sub-Committee with understanding the vision for HTHAC, a copy of a document called Bringing Hornsey Town Hall Back to Life has been provided and is included in the agenda and report pack at pages 91-128. This document considers the history of the premises along with information as to what facilities the premises will have following the completion of the refurbishment. These include the Assembly Hall , function room, Committee Room, Council Chamber, Supper Room, Roof Terrace, Members Room, Mayor's Parlour, Cinema and the Town Hall Square. The document also provides information as to how it is envisaged that these spaces will be utilised from larger events such as concerts to informal meetings.

¹ Premises Licence LN/000015762 was effective 31st March 2016

² Reference HYG/2017/2220

6. Following an evaluation of the premises licence, it was felt that the inconsistent approach to hours and activities would not properly reflect the manner in which the premises hope to trade or adequately promote the licensing objectives. Furthermore, it was felt that there would be wisdom in differentiating between different parts of the building so as to provide a greater degree of clarity as to what activities would take place in certain parts of the building and at what times. Included within that would be bringing parts of the premises in to use that were not covered by the existing licence.
7. It was recognised that it was important to work with the community of this project and to that end, a site visit was arranged and took place on 9th September 2022 with Licensing, Environmental Health and Police being in attendance. At this meeting, the Responsibility Authorities were given a tour of the site and an overview of what the vision for the development would be.
8. Additionally, there was consultation with local councillors, forums and groups. Following these consultations, two residents' meetings were organised and took place on 30th November 2022. The meetings looked at both the development of Hornsey Town Hall Arts Centre and the adjacent Dao by Dorsett Hotels. The meetings were well attended and provided some helpful feedback which inevitably helped shaped the application to vary the premises licence. Additionally, we believe, as is evidenced by the low number of representations, that we were able to assuage many of the concerns which were raised by residents at the meetings.

Summary of variation sought

9. On behalf of the applicant, an application to vary the premises was submitted on 25th October 2023. The last date for representations was 22nd November 2023.
10. The variations sought by this application are essentially:
 - a. To change the name of the Premises Licence Holder to the correct legal name and to update the registered office,
 - b. To amend the approved plan to permit works in line with the major refurbishment as authorised by the planning permission and to add areas (such as the Town Hall Square) which were not previous on any plan,
 - c. To permit off sales of alcohol from the café, and from the bars in the Town Hall into the Town Hall Square,
 - d. To licence the Town Hall Square for the sale of alcohol between 10:00 and 21:00 for one weekend per month and for 10 days each month in July, August and December,
 - e. To licence the Town Hall Square for regulated entertainment between 10:00 and 21:00 for one weekend per month and for 10 days each month in July, August and December,
 - f. To extend the hours for regulated entertainment in parts of the building to 10:00 to 23:30 on Mondays to Wednesdays, 10:00 to 01:30 on Thursdays to Saturdays and 10:00 to 22:45 on Sundays and to extend the hours for late night refreshment in various parts of the building to 23:00 to 23:30 on Mondays to Wednesdays and 23:00 to 01:30 on Thursdays to Saturdays,

- g. To permit the consumption of alcohol and the showing of films with no audible dialogue or music on the roof terrace between 08:00 and 23:00 Mondays to Sundays,
- h. To extend the terminal hour for the whole premises (other than the Town Hall Square on Bank Holidays,
- i. To extend the terminal hour for the whole premises (other than the Town Hall Square on New Years Eve,
- j. To extend the hours for the Supper Room for alcohol and regulated entertainment on Thursdays to Saturdays to 10:00 to 02:00,
- k. To replace conditions.

Response to Representations

11. A representation was made on behalf of the Metropolitan Police. Following discussions revised conditions have been agreed with the Metropolitan Police and these are attached to these submissions as Appendix 1 with the amendments to the condition 11 and the additional conditions shown in bold and italics to explain the changes and additions made to the conditions contained in the agenda and report at pages 29 to 32. Pictures of the walling and balustrading on the roof terrace are attached to these submissions as Appendix 2. The Metropolitan Police have withdrawn their representation on the basis of these amendments and additional conditions.

12. In addition, three representations were received from residents Sharon Kean, Ahmad Foroughzadeh and Georgina Winstow. Their concerns appear to relate to the prevention of nuisance licensing objective.

The suitability of the area for late night bars, entertainment and drinking and the disturbance it will bring to the local residents

13. The PLH has consulted with the Environmental Health Officer on this application and feels that sufficient measures are offered to ensure that the premises will not cause a nuisance to the local residents. The Sub-Committee will note that the EHO has not submitted a representation.

14. The PLH is proposing several conditions which are designed to ensure that the premises operate with the promotion of this licensing objective in mind. These include signage asking customers to leave quietly³, restrictions on hours of external spaces⁴, closure of doors and windows⁵, installation of speakers on anti-vibration plates⁶, noise limiters⁷, restriction on deliveries⁸ and the emptying of refuse⁹, the preparation of an acoustic report¹⁰ and the adoption of a dispersal policy¹¹.

³ Proposed condition 8

⁴ Proposed conditions 11, 12 and 13

⁵ Proposed condition 14

⁶ Proposed condition 15

⁷ Proposed condition 16

⁸ Proposed condition 17

⁹ Proposed condition 18

¹⁰ Proposed condition 19

¹¹ Proposed condition 20

15. In addition, the PLH has adopted an Events / Local Area Management Plan which has as its core the effective management of people so as to minimise the potential for disturbance. This Events/Local Area Management Plan is attached to these submissions as Appendix 3.
16. The Sub-Committee will of course be aware that the current premises licence permits the activities which these residents are concerned about. It is believed that the proposed variation will only further the measures in place to mitigate these concerns.

Removal of the Town Hall Square from public use during events

17. Whilst this is not, strictly speaking, a relevant consideration from a licensing perspective, we believe that the Sub-Committee will be reassured to know that, as part of this development, the PLH has agreed a Community Use Agreement with the London Borough of Haringey to ensure that the premises maintains its place as a community resource. Included within this are measures to ensure community access to parts of the premises and open spaces as well as co-operating with the Council in the enforcement of the agreement.

Litter, noise and unsafe environment

18. Similarly to those concerns relating to noise, the PLH have sought to ensure that these concerns are met with appropriate working practices and conditions and it is believed that those conditions referred to above adequately meet these concerns.

Light Pollution

19. We believe that concerns surrounding light pollution are met by a number of proposed conditions. Specifically the switching off of illuminated signage¹² and the positioning of security lights so as to avoid intrusion¹³.

Daytime noise

20. We believe that those measures which have been referred to above are suitable for imposing reasonable and proportionate restrictions necessary to promote the licensing objectives. The Sub-Committee will no doubt appreciate that the restrictions on noise ought to be different for night time than they are for the day time and a balance needs to be struck. We believe that the proposed conditions meet this need.
21. Furthermore, the Sub-Committee will appreciate that a significant proportion of the premises is given for co-workers to use as their place of work. With this in mind, the applicant recognises that noise is an issue for users of the premises and not just those who surround it. With this in mind, we believe that the conditions and policies proposed properly address these concerns.

¹² Proposed condition 26

¹³ Proposed condition 27

Excessive New Years' Eve Hours

22. The Applicant has sought the continuation of licensable activities from the end of permitted hours on New Year's Eve to the start of New Year's Day. This is not an uncommon approach to permit some flexibility in the use of premises to celebrate the New Year.
23. Where the premises would take advantage of this extension of hours, it is believed that the measures, conditions and policies put in place will provide a suitable level of protection to local residents in ensuring that disturbance is reduced to an acceptable level.

Executive Summary

24. The Applicant worked closely with Responsible Authorities to ensure an application was submitted which struck a balance between respecting the needs of the community and providing commercial flexibility for the PLH. The Metropolitan Police's concerns have been met as a result of which the Metropolitan Police have withdrawn their representation and no other Responsible Authority has submitted a representation.
25. The Applicant has consulted with councillors, local forums and residents as well as having two resident's meetings before submitting this application. It would not be unreasonable to consider that the small number of representations received may suggest that every effort has been made to alleviate concerns.
26. The concerns which have been raised by those residents appear to relate to the licensing objective of the prevention of public nuisance. These concerns are entirely understandable and demand respect. We believe that the measures which are proposed are sufficient to address these concerns. The Sub-Committee will again consider that the EHO, considered to be the expert on issues relating to nuisance, has not raised an objection.
27. The premises currently has a premises licence which covers many of the activities which appear to be of concern to the residents. This means, in reality, that the premises can use the existing authority to do the things that the residents address. We believe that the variation sought provides greater clarity as to how the premises is used, what for and when. Further, the variation imposes obligations on the PLH which are not currently on the licence which, we believe, will fully promote the licensing objectives.
28. The Sub-Committee will be acutely aware that it is open to any person to instigate a review of the premises under s51 Licensing Act 2003.

Joe Havey (Solicitor-Advocate)
Popleston Allen Solicitors

Hornsey Town Hall Arts Centre – Proposed Licence Conditions

Prevention of Crime and Disorder

1. The Premises shall install and maintain a comprehensive CCTV system. All entry and exit points to the premises will be covered in such a manner as to enable frontal identification of every person entering in all expected light conditions. The system will record an external view of the main entrance. The system shall continually record whilst the Premises are open for licensable activities or whilst members of the public are present. All recordings shall be stamped with the correct corresponding date and time. All recordings shall be stored for a minimum period of 31 days.
2. A staff member who is conversant with the operation of the CCTV system shall be on the Premises at all times whilst the Premises are open for licensable activities. This staff member must be able to, at the request of the Police or authorised Council Officer, review and copy any recordings stored by the system and provide to the requesting Officer such copies as they request.
3. An incident log (electronic or paper based) shall be kept at the Premises and made available on request to an authorised Council Officer, the Police or the Fire Service. The log shall record the following:
 - a. All crimes reported to the venue,
 - b. All ejections of patrons,
 - c. Any complaints received concerning crime and disorder,
 - d. Any incidents of disorder,
 - e. Seizures of drugs or offensive weapons,
 - f. Any faults in the CCTV system,
 - g. Any refusal of the sale of alcohol (including the date and time of the refused sale and the name of the member of staff who refused the sale).
 - h. Any visit by a relevant authority or emergency service.
4. The Premises shall operate a Challenge 25 proof of age scheme. The only acceptable forms of identification are recognised photographic identification cards such as a driving licence, passport or proof of age card with the PASS Hologram.
5. All staff authorised by the Designated Premises Supervisor to sell alcohol shall either hold a Person Licence or shall receive relevant training before making any unsupervised sales. The training shall include:

- a. The Licensing Act 2003 in terms of licensing objectives and offences committed under the Act;
- b. The terms and conditions of the Premises Licence;
- c. The sale of age-restricted products. Age-restricted products training shall cover the following steps:
 - i. The assessment of age;
 - ii. How and when to challenge for proof of age;
 - iii. Acceptable proof of age and how to check; and
 - iv. Recording refusals.

This training shall be refreshed once per year. Staff shall sign to confirm that they have received and understood the training. Written records of this training shall be retained at the premises and made available to the Police or authorised officers of the Licensing Authority upon request.

6. The Premises shall operate security including the use of SIA door staff as and when required having undertaken a risk assessment. A copy of the security policy and risk assessment will be provided to the police licensing officer upon request.

Prevention of Public Nuisance

7. The Premises shall display signs at each exit issuing reminders that customers should depart the Premises quietly having regard to the neighbours.
8. The Premises shall, at the main entry, display information relating to the nearby bus stops, taxi ranks and Underground Stations.
9. The Premises Licence Holder shall appoint a dedicated taxi or mini cab company or companies. Staff shall offer to book cars on behalf of patrons. After midnight, all patrons seeking licensed vehicles will be encouraged to remain inside the Premises to await their vehicle.
10. The use of the private external courtyard on the lower ground floor (the Co-Worker's Garden) shall not take place between 21:00 and 07:00 hours.
11. The use of the Square for licensable activities shall be limited to one weekend per month except in July, August and December when the use shall be limited to ~~fourteen~~ **ten** days per month and on all days between the hours of 11:00 and ~~23:00~~ **21:00** for the sale of alcohol and from 11:00 to 21:00 for regulated entertainment other than on New Years Eve when the hours are 10:00 to 0100 the following morning.
12. The roof terrace shall not be used between 23:00 and 08:00 and shall only be used for the consumption of alcohol and showing of films with no publicly audible dialogue or music.

13. All external doors and windows shall be kept closed between 23:00 and 07:00 during the provision of regulated entertainment, except for immediate access and egress.
14. All speakers are mounted on anti-vibration mountings to prevent vibration transmission to neighbouring properties.
15. The Premises shall use electronic noise limiters to ensure that all amplified sound from the Premises is within agreed limits as agreed with the Environmental Health Officer.
16. No deliveries shall take place between the hours of 22:00 and 07:00.
17. The emptying of refuse in external areas shall not take place between 22:00 and 07:00.
18. Before the commencement of Regulated Entertainment, an acoustic report will be prepared and lodged with the Environmental Health Officer. All recommendations in the report shall be complied with.
19. The Premises shall operate a dispersal policy and noise management plan and all staff shall be trained in their implementation. A copy of the policies and written records of this training shall be retained at the premises and made available to the Police or authorised officers of the Licensing Authority upon request.
20. No drinking vessels are permitted to leave the premises, other than takeaway drinks from the café or into the Square when licensable activities are permitted under the benefit of this Premises Licence.
21. No music will be played in, or for the benefit of patrons in external areas of the premises save for events permitted under this licence in the Square.
22. No form of loudspeaker or sound amplification equipment is to be sited on or near the exterior of the premises or in or near any foyer, doorway, window or opening to the premises save in respect of events permitted under this licence in the Square.
23. A complaints book will be held on the premises to record details of any complaints received from neighbours. The information is to include, where disclosed, the complainant's name, location, date, time and subsequent remedial action undertaken. This record must be made available at all times for inspection by Council officers.
24. All ventilation and extraction systems shall be correctly maintained and regularly serviced to ensure that it is operating efficiently and with minimal disturbance to neighbours arising from odour.

25. Illuminated external signage shall be switched off when the premises is closed.
26. Security lights will be positioned to minimise light intrusion to nearby residential premises.

Public Safety

27. Glassware shall not be permitted on the Town Hall Square.
28. Prior to the commencement of licensable activities, the Premises will have the benefit of a Means of Escape Assessment, a copy of which will be lodged with the Fire Authority.

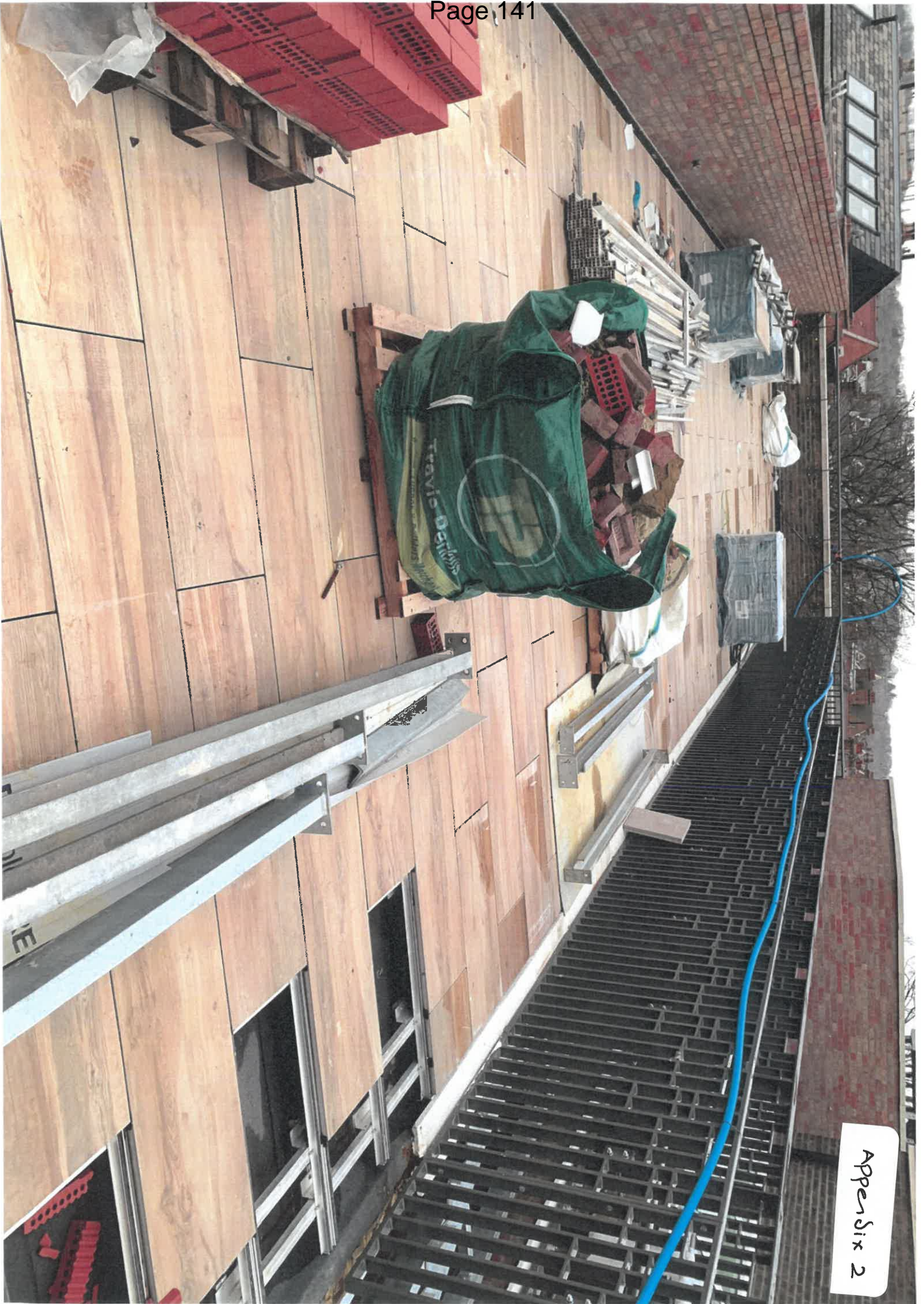
Protection of Children

29. People under the age of 18 shall not be permitted on the premises during licensable activities unless accompanied by a parent, guardian or responsible adult (other than until 2200 in the Retail, Foyer and Café areas shown on the plan attached to the premises licence and in the Town Hall Square at any time) or where attending an age appropriate screening in the cinema.

Additional Conditions Agreed with the Metropolitan Police

1. ***Where the Town Square is intended to be used for the sale of alcohol after 21:00 or Regulated Entertainment at any time the following conditions shall apply:***
 - a. ***The Premises Licence Holder shall notify the Licensing Authority in writing of the proposed date of any such occasion no later than two weeks before the date of it.***
 - b. ***The Premises Licence Holder shall consult and engage with the Police and Licensing Authority, and this will include where necessary, discussing all aspects of the event, including the promotion of the four licensing objectives under the Licensing Act 2003 with the Police and Licensing Authority.***
 - c. ***The results of this event planning process shall be compiled into an Event Management Plan. The Event Management Plan is a work in progress throughout the planning process. It will also contain relevant risk assessments used by the premises licence holder to deliver the event.***

- d. ***The Event Management Plan shall be prepared in consultation with the Police and Licensing Authority and a final copy of the Event Management Plan shall be lodged with the Licensing Authority no less than 14 days before the event.***
2. ***Any external events will be prior assessed for the use of additional barriers to maintain crowd control and prevent disorder.***
3. ***The use of pedestrian barriers shall be utilised on festival days.***
4. ***Security will be stationed at the entrance and exit of the pedestrian barriers when in use, to monitor the amount of people in the square to avoid overcrowding, disorder and crowd control.***
5. ***The balustrade on the roof terrace shall comply with the appropriate building regulation standards before it is used by members of the public.***
6. ***The premises will use SIA accredited personnel on the roof terrace where the roof terrace is open to the public after 20:00 of Fridays and Saturdays. The need for SIA security personnel at other times will be risk assessed and the recommendations of that risk assessment shall be implemented.***



Appendix 2







Hornsey Town Hall Arts Centre Events / Local Area Management Plan

The following document details the measures which Hornsey Town Hall Arts Centre shall implement and uphold to ensure the organised and efficient process of crowd management and dispersal.

Crowd management and dispersal including stewarding

The Arts Centre will host a wide variety of community and private events across its several event spaces. We anticipate that the Town Hall Square will be used periodically for organised seasonal events. All events will be managed in line with the company's health and safety and risk assessments policies which are currently being developed.

All events will be managed by the events and operations team who will ensure the appropriate and safe level of stewarding and event security staff are present and briefed accordingly. The main function of stewards and event security staff is to ensure that potential hazards arising from crowd dynamics are managed and nullified; these include:

- Surging and swaying leading to crushing between people and against fixed structures
- Falling and being trampled underfoot
- Dangerous behaviour, such as climbing onto equipment/structures or throwing object

In regard to crowd control and dispersal following events either within the Town Hall or Arts Centre itself or the Town Hall Square, stewards and event security staff will work to ensure that potential hazards arising from site egress are managed and nullified; these include:

- Pedestrians and moving vehicles sharing the same space
- Poorly maintained and inadequately lit pedestrian routes
- Lack of suitable entrances and exits
- Stalls and concessions obstructing crowd movement and leading to congestion at entrances and exits during busy periods
- Inadequate site design, leading to crossflow of people

In addition to physical crowd management and dispersal by event and security personnel there will also be site signage directing visitors to local transport interchanges in order to direct crowds away from the Town Hall Square, Hatherley Gardens and local residential areas. We will deploy





security guards and moveable barriers where appropriate to the entrance of Hatherley Gardens to prohibit crowds from dispersing on to Hatherley Gardens.

We will ensure that there is a high level of coordination between the Operations and Events Management, permanent onsite and hotel security and event security in order to deploy a coordinated approach to crowd control and dispersal.

We will also continue our positive dialogue and relationship with the local community police force and notify them of any large scale events.

Car park management plan

The commercial operations at the site are to be supported primarily by three general shared-use car parking spaces provided within the area to the rear and with each of these three spaces designed to have the scope to be used by those with mobility difficulties. A further three spaces will be made available within the forecourt / square by means of the prior arrangements available for those with mobility difficulties attending the community / events space.

Vehicular access onto the site would also be permitted via Weston Park, but only by emergency vehicles and by those residents of Weston Park who currently have rights of access along this route to access the garage units to the rear of their properties.

Access to these spaces is controlled by mechanical vehicle gates and use of these spaces will be coordinated via the onsite Estate Manager / Commercial Travel Plan Coordinator / Deliveries and Servicing Coordinator responsible for both the Arts Centre and Hotel operations.

Signage strategy to local transport interchange

The scheme promoter (or nominated representative) will discuss with representatives of London Borough of Haringey and, as required, Transport for London the scope to have installed 'Legible London' information boards adjacent to the Town Hall Square (close to the southbound bus stop) and adjacent to the library along Haringey Park, to direct visitors to local transport interchanges. With coordination from the Estate Manager / Commercial Travel Plan Coordinator, will available from the Arts Centre reception area

Each communal area will have attached to it a notice board, which will display visitor travel information and promote local transport measures and initiatives, and the range of travel access opportunities, in addition to the separate promotional events including sustainable and green travel options and initiatives.

The Estate Manager / Commercial Travel Plan Coordinator will ensure that these are regularly updated, with the information including details and maps showing existing public transport stops / routes and a link to the Journey Planner website by Transport for London.

Shuttle bus strategy for local transport interchanges

For certain event types such as weddings, clients may wish to make use of a shuttle service which will be pre-arranged so that the operator can best match this offer to the user's demands.

The use of a shuttle service will operate in agreement with TfL and LB Haringey and with formal prior notification and orders, to use the southbound bus stop along The Broadway. We intend to restrict vehicular access to Hatherley Gardens in relation to the Town Hall operation to be only for those who have mobility issues and have been granted pre-arranged access to the forecourt area for the purpose of pick-up or drop-off.

Such access of Hatherley Gardens will be subject to licensed marshaling controls, so as to ensure that those with rights of access continue to benefit from these. All other users will be directed away from the site, so as to avoid unnecessary turning within Hatherley Gardens.

Coach drop off and collection area to be identified and the appropriate traffic management orders secured

Beyond the shuttle bus service, we do not anticipate or plan on using formal coach service for guests of the Arts Centre or Hotel. If when making bookings parties mention their intention to arrive via coach, we will in agreement with LB Haringey identify an appropriate and safe single yellow line area on Haringey Park Road whereby coaches may set-down and pick-up which causes minimum disruption to local residents and traffic flows.

Additional Parking controls measures in and around the site

When the development is in operation we will ensure that guests and visitors are made aware of the limited availability of parking in the local area when making bookings, when visiting the Arts Centre and Hotel websites and via physical signage on and around the Town Hall site, these will include for example that all on site parking is exclusively for the use of disabled users, on street is extremely limited due to existing high parking pressures within the Controlled Parking Zones and that there is also limited off street as the Crouch Hall Road car park nearby has limited capacity.



HORNSEY TOWN HALL ARTS CENTRE
HORNSEY TOWN HALL
THE BROADWAY, CROUCH END
LONDON N8 9JJ

We will at all times encourage the use of public transport, cycling, walking, taxi or car sharing in order to keep demands on local parking to a minimum and to at all times promote sustainable and green travel options and initiatives.

There will be continuous coordination between the estate management teams of both the Arts Centre and Hotel operations in order to ensure our travel and parking strategies can be delivered efficiently and cohesively.

Taxi collection strategy

Through a combination of site signage, travel information and stewarding we will direct visitors to the taxi rank situated on Crouch End Hill road for taxi collection and drop off.

The Commercial Travel Plan Coordinator / Deliveries and Servicing Coordinator will work proactively to keep all taxi activity on Hatherley Gardens, Haringey Park and Weston Park roads to a minimum.

We will also look to build partnerships with local taxi companies, offering preferential rates to all visitors to Hornsey Town Hall, this will also allow us to have a dialogue with the taxi operators to ensure they are following guidelines in terms of drop off and pick up areas. We will engage with Haringey Council to discuss the potential of geo-fencing for taxis in certain roads surrounding the Town Hall.

Kind Regards,

Andrew Major, Head of Space and Community
The Time + Space Co. (operating on behalf of Hornsey Town Hall Arts Centre)